



CHU660 Customer Interface Unit

- ▶ M-Bus / RF Communication
- ▶ Keypad with backlight
- ▶ Cost-effective



CHU660 Customer Interface Unit

SPECIFICATIONS

LCD Display

- 8 characters of 7 segment display
- Digital size: 7.76mm × 3.38mm
- With backlight

Display Values

- Cumulative and credit energy
- Instantaneous kW, kVA, Irms, Vrms

Display Status

- Communication status
- Relay status
- Alarm status

Keypad

- 4×3 keypad
- Keypad top-up
- Inquiry information
- Management: Set max power, event reset
- Test: Relay test, LCD test
- With backlight(optional)

Communications

- M-Bus / RF
- Communication with MCU

LED

- Pulse indication
- Alarm indication
- Credit indication

Alarm function

- Balance alarm (LED and buzzer)
- Tamper alarm

Security

- Compatibility STS
- 20 digits token transfer into meter through keypad

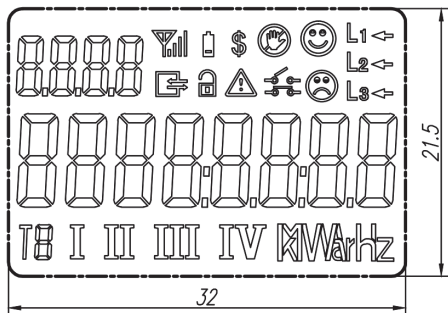
Environmental

- Operating range limit: -40° C to +75° C
- Storage range limit: -40° C to +85° C
- Relative humidity: ≤ 95%RH
- Ingress protection: IP51

Dimensions and weight

- Diameter: 87.5mm
- Height: 18.5mm
- Weight: 0.2kg (Approx.)

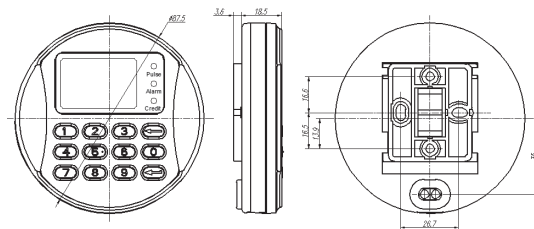
LCD INDICATION



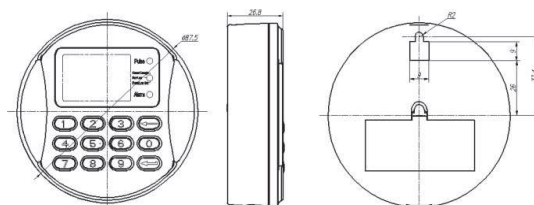
• Units: mm

CIU DIMENSIONS

M-bus type



RF type



• Units: mm



Zhejiang Chint Instrument & Meter Co., Ltd

Add: No.560, Yueming Road, Binjiang District, Hangzhou, Zhejiang, China P.C: 310052 Tel: +86-571-56977777

Fax: +86-577-62919588 E-mail: chintmeter@chint.com

Website: <http://en.chintim.com/>

*All rights reserved. Specification and technical data are subject to change without notice. Please contact us to confirm relevant information on ordering.