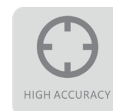




## CHS320 Three Phase Smart Meter

### ALTITUDE series

- ▶ DLMS/COSEM Protocol
- ▶ Flexible Installation
- ▶ Multiple Communication
- ▶ Prepaid/Postpaid Mode Switch



CHINT GLOBAL PTE. LTD.  
Building A3, 3655 SiXian Road,  
Songjiang District, Shanghai, China

Tel: +86-21-5677 7777  
Web: www.chintglobal.com  
E-mail: global-sales@chintglobal.com

A CHNT COMPANY

# CHS320 Three Phase Smart Meter

## SPECIFICATIONS

### Measurement

- Compliance with IEC and EN standard
- Connection type: 3P4W
- Accuracy: Class 1 for active, Class 2 for reactive

### Voltage

- Nominal voltage (Un):  
Direct connection: 3×220/380V ~ 3×240/415V  
Indirect connection: 3×57.7/100V
- Operating range: 0.5Un ~ 1.3Un
- Power consumption: ≤ 2W, 10VA

### Current

- Ib  
Direct connection: 5/10A  
Indirect connection: 1/5A
- Imax:  
Direct connection: 80/100A  
Indirect connection: 6/10A

### Frequency

- 50Hz or 60Hz

### Real-time Clock

- Accuracy within 0.5 seconds per day at 23°C

### LCD Display

- 8 characters of 7 segment display with backlight
- Digital size: 7.5mm × 15mm
- LCD display available without main power

### Battery (Optional)

- Battery easy replaced
- Voltage: 3.6V
- Backup time: 10 years with power

### Measured Values

- Import/Export/Absolute/Algebraic kWh
- Import/Export/ kvarh
- Instantaneous kW, kvar, kVA, Irms, Vrms, Frequency, Power factor

### Maximum Demand

- Maximum demand: kW, kvar
- Intervals programmable from 5 to 60 minutes

### Time of Use

- Up to 4 rates
- Up to 4 seasons each year
- Up to 4 week table
- Up to 8 day table
- Up to 8 Time intervals per day

### Relay (Optional)

- Relay for phase line and neutral line
- Up to 10000 operations

### Keypad (Optional)

- 4 × 3 matrix keypad

### Event Logs

- Standard event, tamper event, control event, grid event
- Configurable event alarming system

### Load Profile

- Up to 4 channels
- Over 4800 records per channel

### Communications

- Optical port / RS485
- Uplink: G3-PLC/GPRS/4G/Wi-SUN module
- Downlink: Mbus/RF
- Protocol: DLMS/COSEM

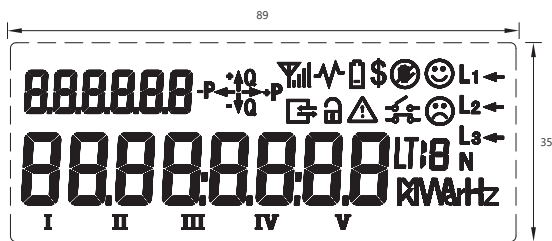
### Environmental

- Operating range limit: -40° C to +70° C
- Storage range limit: -40° C to +80° C
- Relative humidity: ≤ 95% RH
- Ingress protection: IP54

### Dimensions and Weight

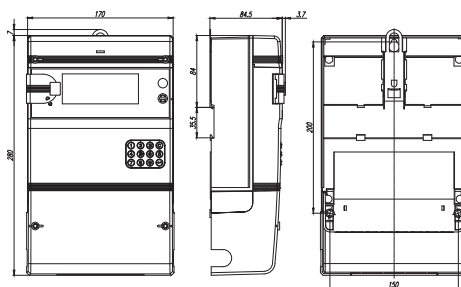
- Dimensions: 280mm × 170mm × 84.5mm
- Weight: 1.8 kg (Approx.)

## LCD INDICATION



• Units: mm

## METER DIMENSIONS



• Units: mm



Zhejiang Chint Instrument & Meter Co., Ltd

Add: No.560, Yueming Road, Binjiang District, Hangzhou, Zhejiang, China P.C: 310052 Tel: +86-571-56977777

Fax: +86-577-62919588 E-mail: chintmeter@chint.com

Website: <http://en.chintim.com/>

\*All rights reserved. Specification and technical data are subject to change without notice. Please contact us to confirm relevant information on ordering.