

CHINT

CHINT GLOBAL



SUB-METERING SOLUTIONS

The Next Reliable Choice-Electricity Meter

CHINT

CHINT GLOBAL

Europa

Italia

CHINT Italia Investment S.r.l.

C/Via A. Pacinotti 28, 30033 Noale (VE)
Tel: +39 041 446614
Fax: +39 041 5845900

República Checa

NOARK Electric Europe s.r.o.

C/Sezemická 2757/2, 193 00 Prague 9
Tel: +420 226 203 120
Email: Europe@noark-electric.com

Turquía

CHINT Turca Elektrik Sanayi VE Ticaret Anonim Sirketi

C/Zumrutevler Mahallesi Ural Sokak No. 22/18 NAS PLAZA B Block
KAT 1, Maltepe, Istanbul
Tel: +90216 621 00 55 Fax: +90216 621 00 50
Email: fatura@chint.com.t

España

CHINT Electrics S.L.

C/ José Echegaray, Num 8.Parque Empresarial Las Rozas Edificio 3,
Planta Baja, Oficina 7-8.C.P: 28232 Las Rozas (Madrid)
Tel: 0034 91 636 59 98 Fax: 0034 91 645 95 82
Email: info@chint.eu

Rusia

ООО "Чинт Электрик"

Юридический адрес: 109544, г. Москва, б-р Энтузиастов, д. 2, этаж 19, ком. 71; 72

Фактический адрес: РФ, 109544, г. Москва, б-р Энтузиастов, д. 2
Тел: +7 (495) 540-61-41
Тел: +7 (800) 222-61-41
Email: cis@chint.com

Norte América

Estados Unidos

NOARK Electric (USA) Inc.

NOARK Electric (USA) Inc.
C.-2188 Pomona Blvd., Pomona, CA 91768
Tel: 626-330-7007 Fax: 626-330-8035
Email: nasales@noark-electric.com

México

CHINT SOLAR MÉXICO S DE RL DE CV

C/ Miguel Cervantes Saavedra 169 Piso 11
Col. Granada Del. Miguel Hidalgo C.P. 11520 CDMX, México
Tel: +52 1-55-8881-6127
Email: marie.casillas@chint-mexico.com

Asia del Este & África

U.A.E

CHINT MIDEEL EAST AND AFRICA DMCC.

C/ Unit No: 2101, Jumeirah business center 1, Jumeirah Lakes Towers,
Dubai UAE
Tel: +97145571532
P.O BOX :337555
Email: chintwaa@chint.com

Egipto

CHINT Electrics (Egypt) Co., Ltd.

C/ Chint office, Smart village, October 6th,Giza, Egypt
Tel: +20 1097173769
P.O BOX : 00202
Email: chinteg@chint.com

América Latina

Brasil

CHINT Elétricos América do Sul Ltda

C/Av. Paulista, 1765 - Edifício Scarpa-Conj.22
Bela Vista -CEP 01311-200-São Paulo- SP
Tel: 0055-11-3266-7654
Email: chintlatinamerica@chint.com

Perú

CHINT LATAM (PERÚ) S.A.C.

Lima
Tel: +51 1 763 4917
Email: chintlatamperu@chint.com

Asia Pacífico

China

Zhejiang CHINT Electrics Co., Ltd.

C/ (Shanghai): Bldg.2, No.3255 Sixian Road, Songjiang 201614 P.R.China
Tel: 0086-21-67777706 Fax: 0086-21-67777777-88225
Email: asiapacific@chint.com

India

CHINT India Energy Solution Private limited

Discovery Tower Plot No. A-17 Ground Floor Industrial Area
Sector: - 62 Noida -201301
India línea directa: - 18002707977
Empresa: - +91 1202975057 Email: marketing@chint.co.in

CHINT GLOBAL PTE. LTD.

Address: Building No.2, 3255 Sixian Road, Songjiang District, Shanghai, China
Postcode: 201614
Tel: +86-21-6777 7777 Http://www.chintglobal.com
Fax: +86-21-6777 7777 E-mail: global-sales@chintglobal.com

Hotline

+86-4001177797



Printed by CHINT GROUP. No part of this brochure may be used or reproduced in any manner whatsoever without written permission. CHINT is the only publisher that can modify or change the content. Parts of the pictures used in the brochure are from the Internet. Please contact us in any case of copyright.



© CHINT GROUP ALL RIGHTS Reserved Recycle Paper Printed 2020.07

ABOUT CHINT



CHINT A leading global provider of smart energy solutions

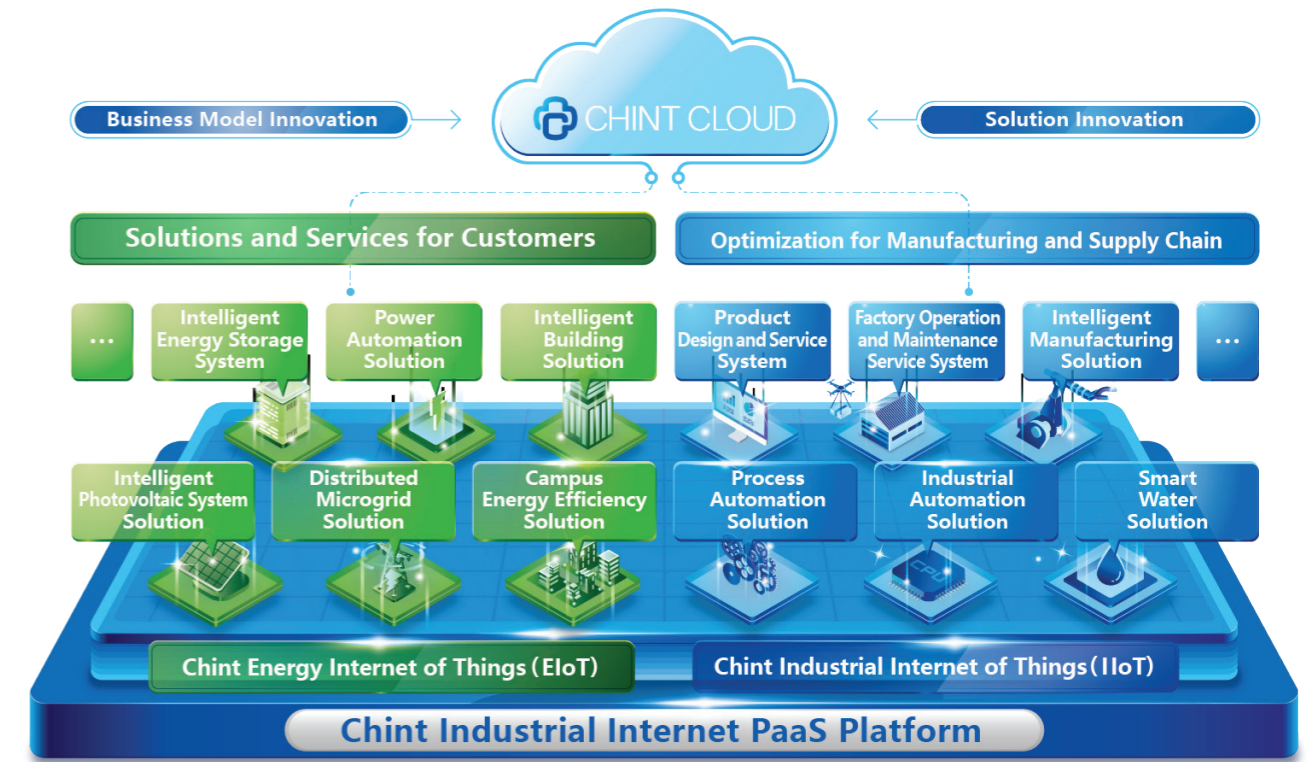
Founded in 1984, CHINT is a leading global provider of smart energy solutions. It is actively deploying “4+1” industrial sectors including smart electrics, green energy, industrial control and automation, smart home and incubator, forming an integrated whole industry chain of “power generation, storage, transmission, substation, distribution, sales and consumption”. And it boasts an extensive business network across over 140 countries and regions as well as more than 30,000 employees and an annual sales revenue of over USD 11.4 billion. CHINT has been ranking among China’s Top 500 companies for 18 consecutive years. Its subsidiary, CHINT Electrics is the first company in China with low-voltage electrics as its main business getting listed on the A-share market as one of the Top 50 Asian listed companies.

To comply with the trend of integrated development of modern energy, intelligent manufacturing and digital technology, CHINT has adopted “One Cloud & Two Nets” as the business strategy. CHINT Cloud fulfills digital application and services in both

internal and external as the platform of intelligent technology and data application. Based on the Industrial Internet of Things (IIoT), CHINT built an intelligent manufacturing system and realizes intelligent application in electrical industry. Relying on the Energy Internet of Things (EIoT), CHINT built its smart energy system and develops the regional EIoT mode.

Focusing on energy system of supply, storage, transmission, distribution and consumption, CHINT has core businesses of clean energy, energy distribution, big data and energy value-added services. Furthermore, CHINT pillar businesses include photovoltaic equipment, energy storage, power transmission & distribution, low-voltage apparatuses, intelligent terminals, software development and control automation. With developing into a platform-based enterprise, CHINT provides a package of energy solutions for public institutions, industrial & commercial users and end users, by building a regional smart energy operation ecosphere.

ONE CLOUD & TWO NETS STRATEGY



Energy system optimization is an inevitable trend against the background of resource shortage, environmental pollution and climate change – three challenges faced by global energy development. To keep in line with the trend, CHINT actively implements the business strategy of One Cloud & Two Nets, continuously promotes the deep integration of big data, IoT, AI and manufacturing industry in stages to become a platform-based enterprise, and leads the new direction of industry development.

As a medium of smart technology and data applications, CHINT Cloud connects corporate in-house manufacturing with operation and management data, realizing digital applications and services both internally and externally.

As a user-centric multi-energy complementary smart energy system, CHINT EIoT provides a package of energy solutions for governments, industrial & commercial users and end users. Its business includes Smart Energy Efficiency, Smart Power, Smart Home and Smart Clean Energy, etc.

As a smart manufacturing system based on corporate digital transformation, CHINT IIoT constitutes a flexible, high-efficiency and intelligent industrial system. Its business includes Intelligent Manufacturing, Intelligent Industry, Smart Water, Smart Heating, etc.

SUB-METERING SOLUTION



- ▶ Easy to install
- ▶ Easy to network
- ▶ High accuracy
- ▶ With standard-rail

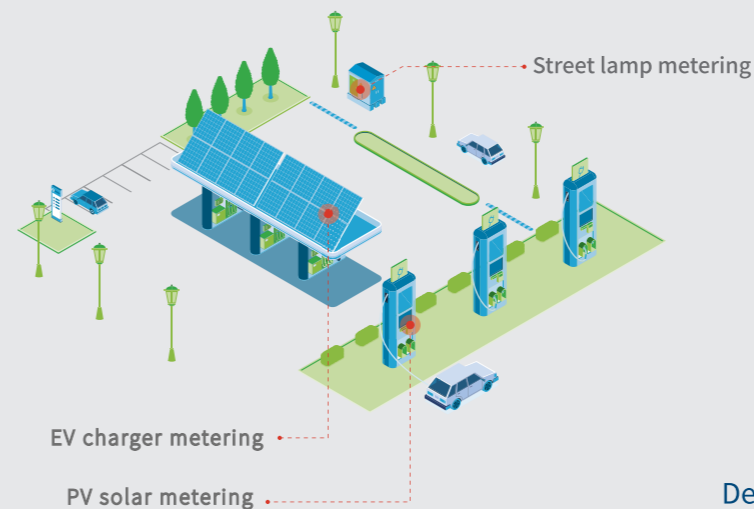


- ▶ Remote control
- ▶ Remote measurement
- ▶ Remote communication
- ▶ World class components



- ▶ Wide range
- ▶ Anti-tamper
- ▶ High resistance fire
- ▶ Low power consumption

CHINT METER CATCH YOUR MOMENT



35mm DIN-Rail

Smaller size & easier installation
Delicate structure suitable for complex site environment

CHINT METER CATCH YOUR MOMENT

CHINT METER CATCH YOUR MOMENT



Distribution Cabinet



Distribution Cabinet



Apartment



Factory



Shopping Mall



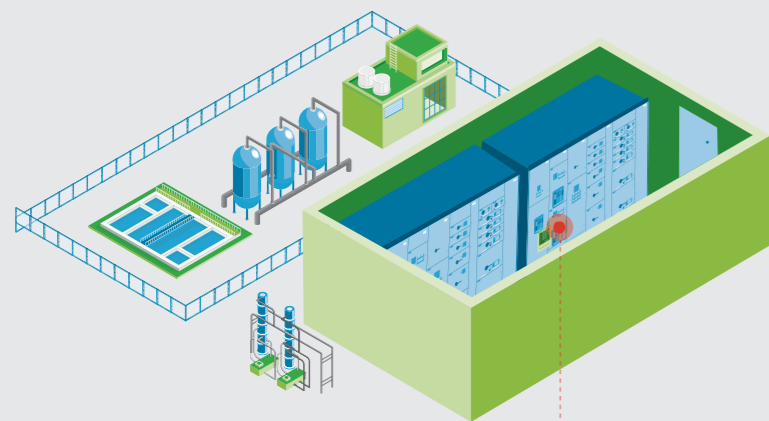
Retail Market



School



Distribution Cabinet



C&I distribution cabinet metering



Class 0.5S

High accuracy measurement

3-digit decimal display provides accurate data



Apartment metering

Household metering



960°C

Resistance to fire

Refractory materials make electricity safer

CHINT PRODUCTS

01

CHINT PRODUCTS

1.1 DDSU666 Single Phase Smart Meter

1.2 DTSU666 Three Phase Smart Meter

1.3 DSSU666 Three Phase Smart Meter

1.4 Smart Meter Selection Guide

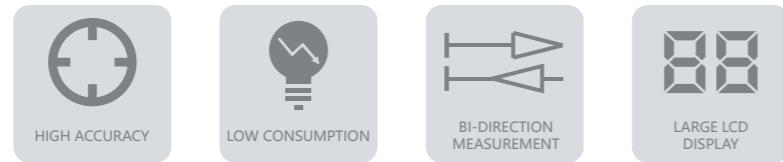
Smart Meter



Function

- LCD Display
- Bi-Direction Measurement
- 35mm DIN-Rail

Features



Certification

MID RoHS



DDSU666 Single Phase Smart Meter

SPECIFICATIONS



Current

- 5(80)A

Frequency

- 50Hz or 60Hz

LCD Display

- 6 characters of 7 segment display
- Digital size: 5.3mm x 2.8mm

Measurement

- Connection type: 1P2W
- Accuracy: Class 1.0 for active

Voltage

- Nominal voltage (Un): 220V, 230V, 240V
- Operating range: 0.85Un ~ 1.15Un
- Power consumption: ≤ 1W, 8VA

LED Indication

- Pulse Indication

Measured Values

- Total kWh
- Instantaneous kW, Vrms, Irms, frequency, power factor

Communications(Optional)

- RS485
- Protocol: Modbus-RTU

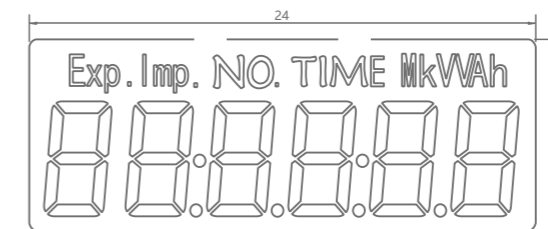
Environmental

- Working temperature range: -10° C to +45° C
- Limited temperature range: -25° C to +75° C
- Relative humidity(Annually average): ≤ 75%

Dimensions

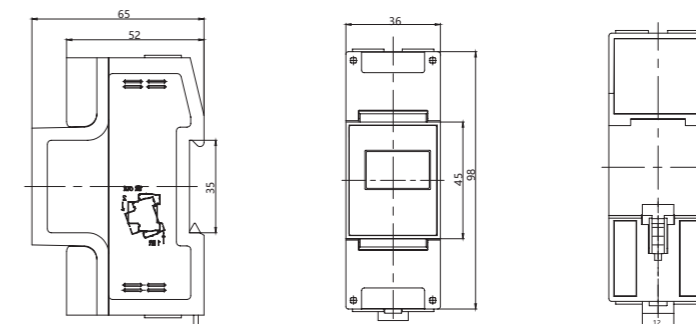
- Dimensions: 98mm x 65mm x 36mm

LCD INDICATION



Units: mm

METER DIMENSIONS



Units: mm

1.1

DDSU666 Single Phase Smart Meter

SPECIFICATIONS



Built-in relay

Measurement

- Connection type: 1P2W
- Accuracy: Class 1.0 for active

Voltage

- Nominal voltage (Un): 220V, 230V, 240V
- Operating range: 0.85Un ~ 1.15Un
- Power consumption: ≤ 1W, 8VA

Current

- 5(80)A

Frequency

- 50Hz or 60Hz

LCD Display

- 7 characters of 7 segment display
- Digital size: 5.3mm × 2.8mm

LED Indication

- Pulse Indication

Measured Values

- Total kWh
- Instantaneous kW, Vrms, Irms, frequency, power factor

Relay

- Internal relay
- One relay/80A

Communications

- RS485
- Protocol: Modbus-RTU

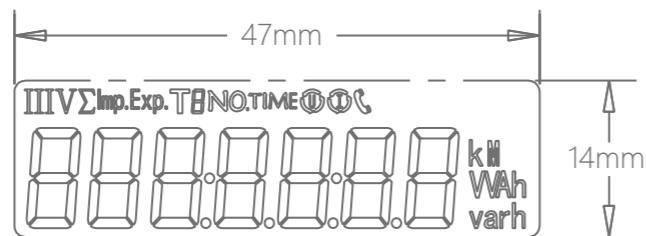
Environmental

- Working temperature range: -10° C to +45° C
- Limited temperature range: -25° C to +75° C
- Relative humidity(Annually average): ≤ 75%

Dimensions

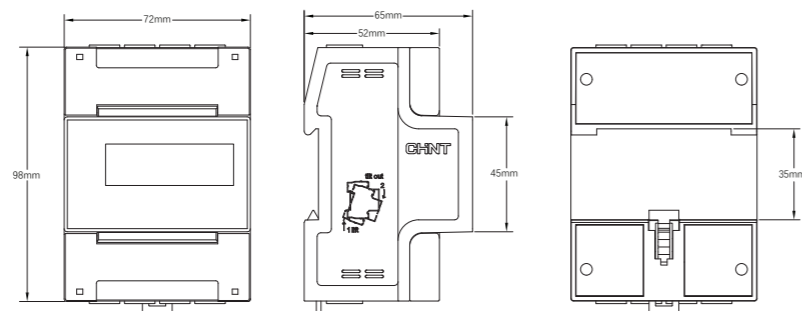
- Dimensions: 98mm × 65mm × 72mm

LCD INDICATION



Units: mm

METER DIMENSIONS



Units: mm

1.2

DTSU666 Three Phase Smart Meter

SPECIFICATIONS



Current

- 1.5(6)A
- 5(80)A

Frequency

- 50Hz or 60Hz

LCD Display

- 7 characters of 7 segment display
- Digital size: 5.3mm × 2.8mm

LED Indication

- Pulse Indication

Measured Values

- Total kWh, kvarh
- Instantaneous kW, kvar
- Instantaneous Irms, Vrms, frequency, power factor

Measurement

- Connection type: 3P4W
- Accuracy: Class 1.0 for active, Class 2.0 for reactive

Voltage

- Nominal voltage (Un): 3×120~138/208~240V, 3×220~240/380~415V
- Operating range: 0.85Un ~ 1.15Un
- Power consumption: ≤ 1W, 8VA

Communications(Optional)

- RS485
- Modbus-RTU

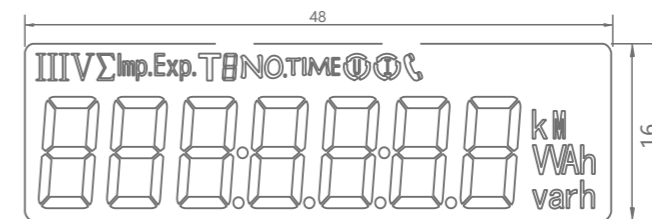
Environmental

- Working temperature range: -10° C to +45° C
- Limited temperature range: -25° C to +75° C
- Relative humidity(Annually average): ≤ 75%

Dimensions

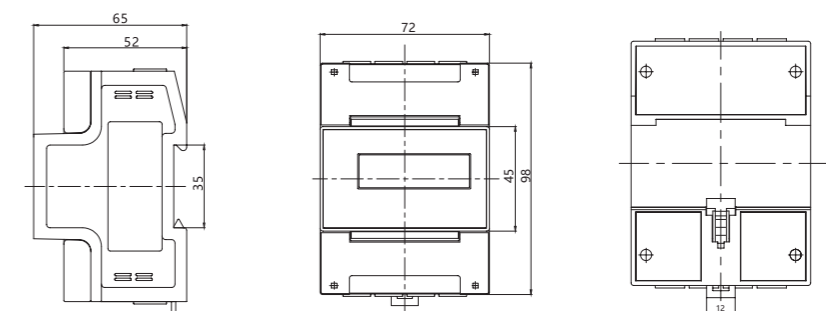
- Dimensions: 98mm × 65mm × 72mm

LCD INDICATION



Units: mm

METER DIMENSIONS



Units: mm

1.2

DTSU666 Three Phase Smart Meter

SPECIFICATIONS



Built-in relay

Measurement

- Connection type: 3P4W
- Accuracy: Class 1.0 for active, Class 2.0 for reactive

Voltage

- Nominal voltage (Un): 3×230/400V
- Operating range: 0.85Un ~ 1.15Un
- Power consumption: ≤ 1W, 8VA

Current

- 5(60)A

Frequency

- 50Hz or 60Hz

LCD Display

- 7 characters of 7 segment display
- Digital size: 5.3mm × 2.8mm

LED Indication

- Pulse Indication

Measured Values

- Total kWh, kvarh
- Instantaneous kW, kvar
- Instantaneous Irms, Vrms, frequency, power factor

Relay

- Internal relay
- Three relay/80A

Communications

- RS485
- Modbus-RTU

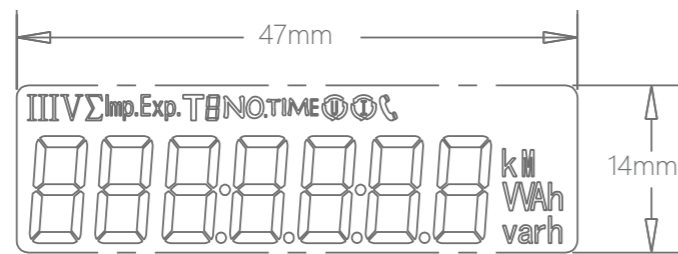
Environmental

- Working temperature range: -10° C to +45° C
- Limited temperature range: -25° C to +75° C
- Relative humidity(Annually average): ≤ 75%

Dimensions

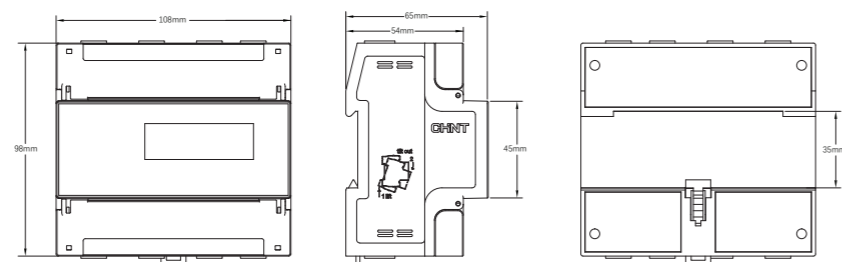
- Dimensions: 98mm × 65mm × 108mm

LCD INDICATION



Units: mm

METER DIMENSIONS



Units: mm

1.3

DSSU666 Three Phase Smart Meter

SPECIFICATIONS



Measurement

- Connection type: 3P3W
- Accuracy: Class 1.0 for active, Class 2.0 for reactive

Voltage

- Nominal voltage (Un): 3×400V
- Operating range: 0.85Un ~ 1.15Un
- Power consumption: ≤ 1W, 8VA

Current

- 1.5(6)A

Frequency

- 50Hz or 60Hz

LCD Display

- 7 characters of 7 segment display
- Digital size: 5.3mm × 2.8mm

LED Indication

- Pulse Indication

Measured Values

- Total kWh
- Total kvarh
- Instantaneous kW, kvar
- Instantaneous Irms, Vrms, frequency, power factor

Communications(Optional)

- RS485
- Modbus-RTU

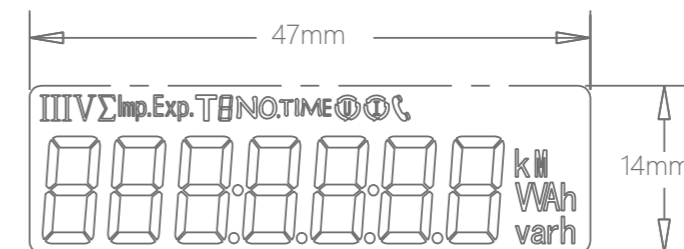
Environmental

- Working temperature range: -10° C to +45° C
- Limited temperature range: -25° C to +75° C
- Relative humidity(Annually average): ≤ 75%

Dimensions

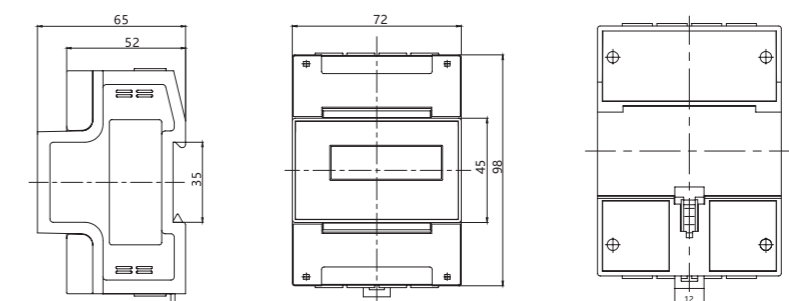
- Dimensions: 98mm × 65mm × 72mm

LCD INDICATION



Units: mm

METER DIMENSIONS



Units: mm

Smart Meter Selection Guide

NO.	Type	Meter Type	Connection	Voltage	Current	Frequency	Communication		Relay	Dimensions (L x W x H, mm)	Qty
							Interface	Protocol			
1	DDSU666	1P2W	DC	230/240V	5(80)A	50Hz/60Hz	/	/	/	2P: 98mm×36mm×65mm	
2	DDSU666	1P2W	DC	230/240V	5(80)A	50Hz/60Hz	RS485	Modbus-RTU	/	2P: 98mm×36mm×65mm	
3	DDSU666	1P2W	DC	230/240V	5(80)A	50Hz/60Hz	RS485	Modbus-RTU	●	4P: 98mm×72mm×65mm	
4	DSSU666	3P3W	CT	3×400V	1.5(6)A	50Hz/60Hz	/	/	/	4P: 98mm×72mm×65mm	
5	DSSU666	3P3W	CT	3×400V	1.5(6)A	50Hz/60Hz	RS485	Modbus-RTU		4P: 98mm×72mm×65mm	
6	DTSU666	3P4W	DC	3×230/400V	5(80)A	50Hz/60Hz	/	/	/	4P: 98mm×72mm×65mm	
7	DTSU666	3P4W	CT	3×230/400V	1.5(6)A	50Hz/60Hz	/	/	/	4P: 98mm×72mm×65mm	
8	DTSU666	3P4W	DC	3×230/400V	5(80)A	50Hz/60Hz	RS485	Modbus-RTU	/	4P: 98mm×72mm×65mm	
9	DTSU666	3P4W	CT	3×230/400V	1.5(6)A	50Hz/60Hz	RS485	Modbus-RTU	/	4P: 98mm×72mm×65mm	
10	DTSU666	3P4W	DC	3×120~138 /208~240V	5(80)A	50Hz/60Hz	/	/	/	4P: 98mm×72mm×65mm	
11	DTSU666	3P4W	CT	3×120~138 /208~240V	1.5(6)A	50Hz/60Hz	/	/	/	4P: 98mm×72mm×65mm	
12	DTSU666	3P4W	DC	3×230/400V	5(60)A	50Hz/60Hz	RS485	Modbus-RTU	●	6P: 98mm×108mm×65mm	

Note: 1P2W: Single phase two wire, 3P3W: Three phase three wire, 3P4W: Three phase four wire
DC: Direct connection, CT: Current transformer
/ indicates this function is not available
● indicates this function is available

CHINT PRODUCTS

02

CHINT PRODUCTS

-
- 2.1** PA/PZ666- □ series Single Phase Digital Ammeter, Voltmeter

 - 2.2** PA/PZ666- □ series Three Phase Digital Ammeter, Voltmeter

 - 2.3** PD666- □ series Three Phase Digital Multi-function Meter

 - 2.4** Digital Panel Meter Selection Guide

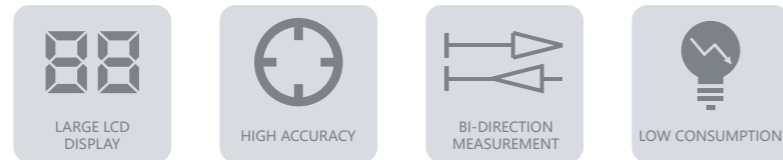
Digital Panel Meter



Function

- Large LCD or LED Display
- High accuracy measurement
- Plug and Play

Features



Certification

RoHS CE

PA/PZ666- □ series Three Phase Digital Ammeter, Voltmeter

SPECIFICATIONS



Single Phase Digital Ammeter

Single Phase Digital Voltmeter

Main functions and characteristics

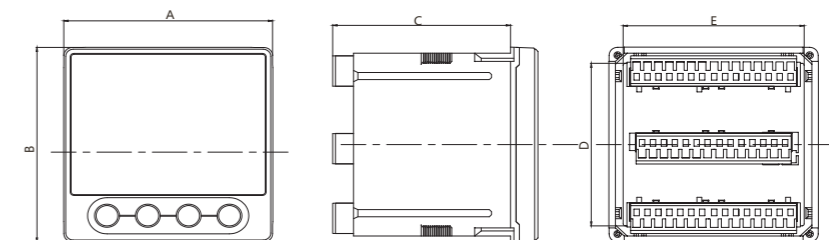
- Real-time measurement and indication for the current and voltage value of the power circuit.
- Extensible relay digital output function.
- Extensible RS485 communication interface, it according to Modbus-RTU communication protocol, and baud rate can be set.

Technical parameters

Items	Specification
Voltage	AC 0-450V selectable, other special specifications can be custom-made
Current	AC 0-5A selectable, other special specifications can be custom-made
Frequency	45Hz~65Hz
Accuracy class	Class 0.5
Auxiliary Power Supply	220VAC±20%, AC/DC85-264V switch power supply customizable
Operation temperature range	Operation temperature range: -10° C ~ 45° C, limit operation temperature range: -25° C ~ 70° C
Power consumption	≤ 2W/10VA
Display mode	LED display

External and installation dimensions

Model	Panel dimension (A×B)	Hole spacing dimensions (E×D)	Depth (C)
P-2	72×72	68×68	90
P-3	96×96	92×92	90
P-4	48×48	45×45	110



Units: mm

2.2

PA/PZ666- □ series Single Phase Digital Ammeter, Voltmeter

SPECIFICATIONS



Three Phase Digital Ammeter



Three Phase Digital Voltmeter

Main functions and characteristics

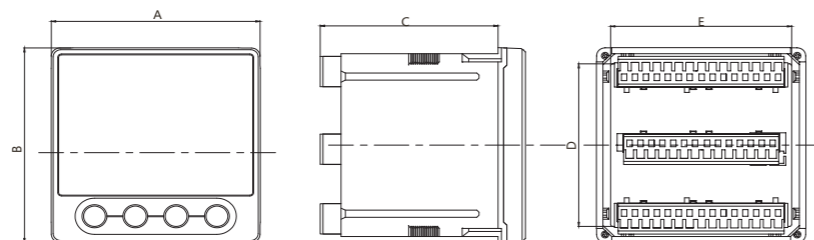
- Real-time measurement and indication for the current and voltage value of the power circuit
- Extensible relay digital output function.
- Extensible RS485 communication interface, it according to Modbus-RTU communication protocol, and baud rate can be set.

Technical parameters

Items	Specification
Voltage	AC 0-450V, other special specifications can be custom-made
Current	AC 0-5A, other special specifications can be custom-made
Frequency	45Hz~65Hz
Accuracy class	Class 0.5
Auxiliary Power Supply	220VAC±20%, AC/DC85-264V switch power supply customizable
Operation temperature range	Operation temperature range: -10° C ~ 45° C, limit operation temperature range: -25° C ~ 70° C
Power consumption	≤ 2W/10VA
Display mode	LED display

External and installation dimensions

Model	Panel dimension (A×B)	Hole spacing dimensions (E×D)	Depth (C)
P-2	72×72	68×68	90
P-3	96×96	92×92	90
P-4	48×48	45×45	110



Units: mm

2.3

PD666- □ series Three Phase Digital Multi-function Meter

SPECIFICATIONS



LCD display



LED display

Main functions and characteristics

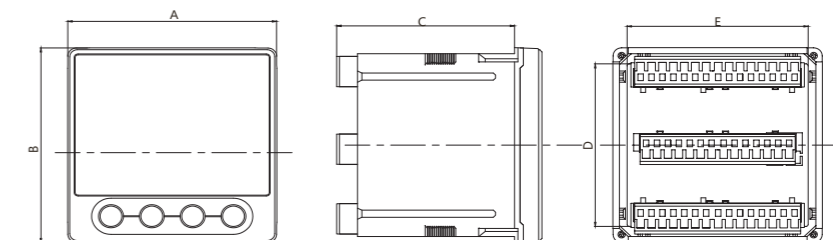
- LED and LCD display function.
- Measurement three phase current, voltage, active power, reactive power, power factor, frequency, import and export active energy, four quadrant reactive energy.
- RS485 communication interface, it according to Modbus-RTU communication protocol, and baud rate can be set.
- Extensible digital output function.

Technical parameters

Items	Specification
Voltage	AC 0-450V
Current	AC 0-5A
Frequency	45Hz~65Hz
Accuracy class	Class 0.5
Auxiliary Power Supply	AC/DC85-264V switch power supply
Operation temperature range	Operation temperature range: -10° C ~ 45° C, limit operation temperature range: -25° C ~ 70° C
Power consumption	≤ 2W/10VA
Display mode	LCD or LED display

External and installation dimensions

Model	Panel dimension (A×B)	Hole spacing dimensions (E×D)	Depth (C)
P-2	72×72	68×68	90
P-3	96×96	92×92	90



Units: mm

Digital Panel Meter Selection Guide

NO.	Type	Meter Type	Voltage	Current	Current ratio	Communication		Digital Output	Display	Panel dimension	Hole spacing dimension	Qty
						Interface	Protocol					
1	PA666-2	Single phase Ammeter	/	*A/5A	Configurable	/	/	/	LED	72mm×72mm	68mm×68mm	
2	PA666-2T	Single phase Ammeter	/	*A/5A	Configurable	RS485	Modbus-RTU	/	LED	72mm×72mm	68mm×68mm	
3	PZ666-2	Single phase Voltmeter	450V	/	/	/	/	/	LED	72mm×72mm	68mm×68mm	
4	PZ666-2T	Single phase Voltmeter	450V	/	/	RS485	Modbus-RTU	/	LED	72mm×72mm	68mm×68mm	
5	PA666-3	Single phase Ammeter	/	*A/5A	Configurable	/	/	/	LED	96mm×96mm	92mm×92mm	
6	PA666-3T	Single phase Ammeter	/	*A/5A	Configurable	RS485	Modbus-RTU	/	LED	96mm×96mm	92mm×92mm	
7	PZ666-3	Single phase Voltmeter	450V	/	/	/	/	/	LED	96mm×96mm	92mm×92mm	
8	PZ666-3T	Single phase Voltmeter	450V	/	/	RS485	Modbus-RTU	/	LED	96mm×96mm	92mm×92mm	
9	PA666-4	Single phase Ammeter	/	*A/5A	Configurable	/	/	/	LED	48mm×48mm	45mm×45mm	
10	PA666-4T	Single phase Ammeter	/	*A/5A	Configurable	RS485	Modbus-RTU	/	LED	48mm×48mm	45mm×45mm	
11	PZ666-4	Single phase Voltmeter	450V	/	/	/	/	/	LED	48mm×48mm	45mm×45mm	
12	PZ666-4T	Single phase Voltmeter	450V	/	/	RS485	Modbus-RTU	/	LED	48mm×48mm	45mm×45mm	
13	PA666-2S	Three phase Ammeter	/	*A/5A	Configurable	/	/	/	LED	72mm×72mm	68mm×68mm	
14	PA666-2ST	Three phase Ammeter	/	*A/5A	Configurable	RS485	Modbus-RTU	/	LED	72mm×72mm	68mm×68mm	
15	PZ666-2S	Three phase Voltmeter	450V	/	/	/	/	/	LED	72mm×72mm	68mm×68mm	
16	PZ666-2ST	Three phase Voltmeter	450V	/	/	RS485	Modbus-RTU	/	LED	72mm×72mm	68mm×68mm	
17	PA666-3S	Three phase Ammeter	/	*A/5A	Configurable	/	/	/	LED	96mm×96mm	92mm×92mm	
18	PA666-3ST	Three phase Ammeter	/	*A/5A	Configurable	RS485	Modbus-RTU	/	LED	96mm×96mm	92mm×92mm	
19	PZ666-3S	Three phase Voltmeter	450V	/	/	/	/	/	LED	96mm×96mm	92mm×92mm	
20	PZ666-3ST	Three phase Voltmeter	450V	/	/	RS485	Modbus-RTU	/	LED	96mm×96mm	92mm×92mm	
21	PA666-4S	Three phase Ammeter	/	*A/5A	Configurable	/	/	/	LED	48mm×48mm	45mm×45mm	
22	PZ666-4S	Three phase Voltmeter	450V	/	/	/	/	/	LED	48mm×48mm	45mm×45mm	
23	PD666-2S3	Three Phase Multi-function Meter	3×450V	3×*A/5A	Configurable	RS485	Modbus-RTU	/	LCD	72mm×72mm	68mm×68mm	
24	PD666-2SK3	Three Phase Multi-function Meter	3×450V	3×*A/5A	Configurable	RS485	Modbus-RTU	●	LCD	72mm×72mm	68mm×68mm	
25	PD666-2S4	Three Phase Multi-function Meter	3×450V	3×*A/5A	Configurable	RS485	Modbus-RTU	/	LED	72mm×72mm	68mm×68mm	
26	PD666-2SK4	Three Phase Multi-function Meter	3×450V	3×*A/5A	Configurable	RS485	Modbus-RTU	●	LED	72mm×72mm	68mm×68mm	
27	PD666-3S3	Three Phase Multi-function Meter	3×450V	3×*A/5A	Configurable	RS485	Modbus-RTU	/	LCD	96mm×96mm	92mm×92mm	
28	PD666-3SK3	Three Phase Multi-function Meter	3×450V	3×*A/5A	Configurable	RS485	Modbus-RTU	●	LCD	96mm×96mm	92mm×92mm	
29	PD666-3S4	Three Phase Multi-function Meter	3×450V	3×*A/5A	Configurable	RS485	Modbus-RTU	/	LED	96mm×96mm	92mm×92mm	
30	PD666-3SK4	Three Phase Multi-function Meter	3×450V	3×*A/5A	Configurable	RS485	Modbus-RTU	●	LED	96mm×96mm	92mm×92mm	

Note: / indicates this function is not available
● indicates this function is available

CHINT PRODUCTS

03

CHINT PRODUCTS

3.1 DDS666 Single Phase Electricity Meter

3.2 DTS634 Three Phase Electricity Meter

3.3 Electricity Meter Selection Guide

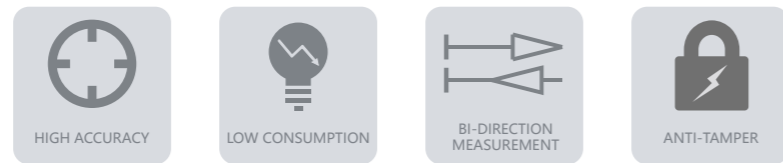
Electricity Meter



Function

- Low Power Consumption
- Bi-Direction Measurement
- Optional Display

Features



Certification



DDS666 Single Phase Electricity Meter

SPECIFICATIONS



LCD type



Register type

Measurement

- Compliance with IEC 62052-11 and IEC 62053-21
- Element: 1P2W
- Accuracy: Class 1.0 for active

Voltage

- Nominal voltage (Un): 120V, 220V, 230V, 240V
- Operating range: 0.75Un ~ 1.2Un
- Power consumption: ≤ 2W, 10VA

Current

- 5(100)A
- 10(100)A
- 20(100)A

Frequency

- 50Hz or 60Hz, ±5%

LCD Display (LCD type only)

- 8 characters of 7 segment display

LED Indication

- Pulse Indication

Battery (Optional)

- Built-in Battery
- Voltage: 3.6V
- Backup time: 15 years with power

Measured Values

- Absolute kWh

Register Display (Optional)

- 5+1 display

Communications (LCD type only)

- 7 characters of 7 segment display
- Digital size: 5.3mm × 2.8mm

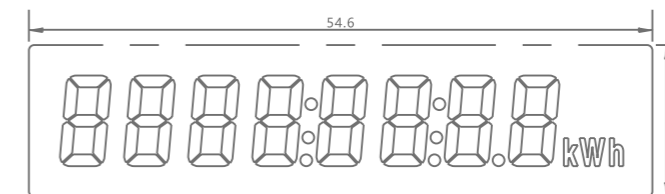
Environmental

- Operating range limit: -40° C to +75° C
- Storage range limit: -40° C to +85° C
- Relative humidity: ≤ 95% RH
- Ingress protection: IP54

Dimensions and weight

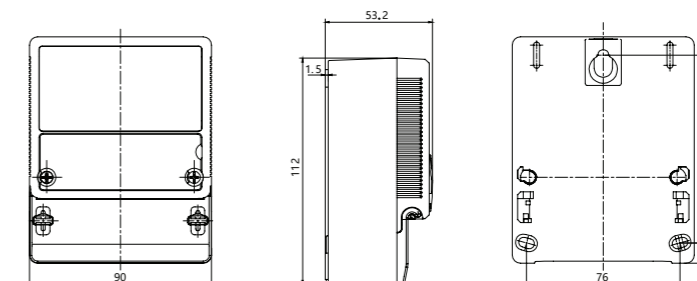
- Dimensions: 112mm × 90mm × 53.2mm
- Weight: 0.3 kg (Approx.)

LCD INDICATION



Units: mm

METER DIMENSIONS



Units: mm

3.2

DTS634 Three Phase Electricity Meter

SPECIFICATIONS



LCD type



Register type

Measurement

- Compliance with IEC 62052-11 and IEC 62053-21
- Element: 3P4W
- Accuracy: Class 1.0 for active, Class 2.0 for reactive

Voltage

- Nominal voltage (Un): 3×220/380V ~ 3×240/415V
- Operating range: 0.75Un ~ 1.2Un
- Power consumption: ≤ 2W, 10VA

Current

- 1.5(6)A
- 10(100)A

Frequency

- 50Hz or 60Hz, ±5%

LCD Display (LCD type only)

- 8 characters of 7 segment display
- 6+2 display
- Display available without main power LCD Display
- Digital size: 7.1mm × 15.9mm

LED Indication

- Pulse Indication

Measured Values

- Import/Export/Absolute kWh
- Instantaneous kW, kvar, kVA, Irms, Vrms, Frequency, Power factor (LCD type only)

Register Display (Optional)

- 5+1 display

Communications (LCD type only)

- Optical port (optional)
- RS-485 (optional)

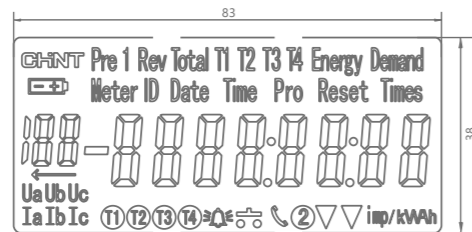
Environmental

- Operating range limit: -40° C to +75° C
- storage range limit: -40° C to +85° C
- Relative humidity: ≤ 95% RH
- Ingress protection: IP54

Dimensions and weight

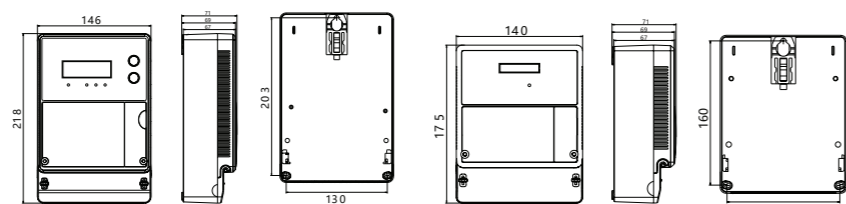
- Register type: 175mm × 140mm × 71mm
- LCD type: 218mm × 146mm × 71mm
- Weight: Register type 0.9 kg (Approx.)
LCD type 1.3 kg (Approx.)

LCD INDICATION



Units: mm

METER DIMENSIONS



LCD type

Register type

Units: mm

3.3

Electricity Meter Selection Guide

NO.	Type	Meter Type	Connection	Voltage	Current	Accurate	Communication	Display		Dimensions (L x W x H)	Qty
								LCD	Register		
1	DDS666	1P2W	DC	220V	10(100)A	Class 1	/		•	112mm×90mm×53.2mm	
2	DDS666	1P2W	DC	230V	10(100)A	Class 1	/		•	112mm×90mm×53.2mm	
3	DDS666	1P2W	DC	220V	5(100)A	Class 1	/		•	112mm×90mm×53.2mm	
4	DDS666	1P2W	DC	220V	20(100)A	Class 1	Far IR	•	•	112mm×90mm×53.2mm	
5	DDS666	1P2W	DC	220V	5(100)A	Class 1	Bluetooth	•	•	112mm×90mm×53.2mm	
6	DDS666	1P2W	DC	230V	5(100)A	Class 1	Far IR	•	•	112mm×90mm×53.2mm	
7	DDS666	1P2W	DC	230V	5(100)A	Class 1	Bluetooth	•	•	112mm×90mm×53.2mm	
8	DTS634	3P4W	DC	3×220/380V	10(100)A	Class 1	/		•	175mm×140mm×71mm	
9	DTS634	3P4W	DC	3×230/400V	10(100)A	Class 1	/		•	175mm×140mm×71mm	
10	DTS634	3P4W	CT	3×220/380V	1.5(6)A	Class 1	RS485 & Far IR	•	•	218mm×146mm×71mm	
11	DTS634	3P4W	DC	3×220/380V	10(100)A	Class 1	RS485 & Far IR	•	•	218mm×146mm×71mm	
12	DTS634	3P4W	DC	3×230/400V	10(100)A	Class 1	RS485 & Far IR	•	•	218mm×146mm×71mm	

Note: 1P2W: Single phase two wire, 3P4W: Three phase four wire
DC: Direct connection, CT: Current transformer
/ indicates this function is not available
• indicates this function is available