



Company Profile

Zhejiang Chint Instrument & Meter Co., Ltd. (hereinafter called company), founded in 1998, which is one of the core subsidiaries of the CHINT Group. The company is a national high-tech enterprise for scientific R&D, manufacturing and sales. The company is provided with a registered capital of RMB 105 Million, has more than 2000 employees at present.

The company's main target is to build a global advanced metering product and systems' R&D and manufacturer. The main products are smart meters, electronic watt-hour meters, mechanical meters, electricity information collection systems, prepaid vending management systems, diaphragm gas meters and mounted digital meters.

The company management is strictly in accordance with ISO9001, ISO14001, OHSAS18001, ISO10012 management system. The rules and regulations are applied perfectly, our company attaches great importance to the construction of information system, using SAP (ERP) system auxiliary enterprise operation management. We are listed by the national ministry as "pilot enterprises" for management system of informationization and industrialization fusion implement standard in 2014.

The company has advanced applicable production crafts and production lines are in accordance with EU RoHS directive. All production lines adopt MES production management system with the traceability of the whole process and material batch which to ensure the reliable quality control; equipped with a complete incoming test equipment which can strictly control the quality of incoming materials. What is more, our company has the measuring room which can transfer reliable values for the manufacturing test equipment and also has the fully functional product performance test laboratory which can ensure products' reliability and stability from R&D to mass production.

The company has totally construction area more than 80000 square meters' measurement building in IOT Industry zone of Binjiang District in Hangzhou, which is the company's research incubation base. With the inspection and test equipment as well as software tools to ensure the quality of R&D process, applying PLM system and SVN version management system effectively to make product R&D process standardization, criterion and modularization.

The company independently developed more than 420 new products, among which 76 items are provincial-level new products; 37 patents, including 8 invention patents; 58 software copyrights; and repeatedly won the national, provincial and municipal progress prize in science and technology; hosted and participated formation and modification of more than 50 international, national and industrial standards. Certain products are awarded as China Machinery Industry Science and Technology Progress Award or listed in the national Torch Program. A variety of leading products have passed MID, KEMA, NMI, STS and other international authority certifications.

The company always adhere to "User-centric", establish marketing engineer service team. At present we have offices in 28 provinces (municipalities and autonomous regions) in china, and service network throughout our country ensure timely response and properly handled service; and also set up 6 offices abroad, products are sold well in more than 70 countries and regions.



CHNT 正泰

让电尽其所能
Empower the World

➤ DDSID666 Single Phase Smart Meter

● General

DDSID666 is an advanced and innovative smart meter targeted to the international upscale AMI market. It has several communication modes: TIC, Euridis 2, G3-PLC (Ipv6 supported). This meter is equipped a dot matrix LCD which can display various information and which is used in the energy meter field for first time. The Supply contract and Grid contract function can bill separately, suitable for distributed energy applications. The remote firmware update function enables a long-term optimization of the meter. A non-rivet design is adopted, which is convenient for automatic production. The 20-year lifetime design is at first class in the world. This meter also complies with IEC 62056 and EN50470 standards.

● Highlight

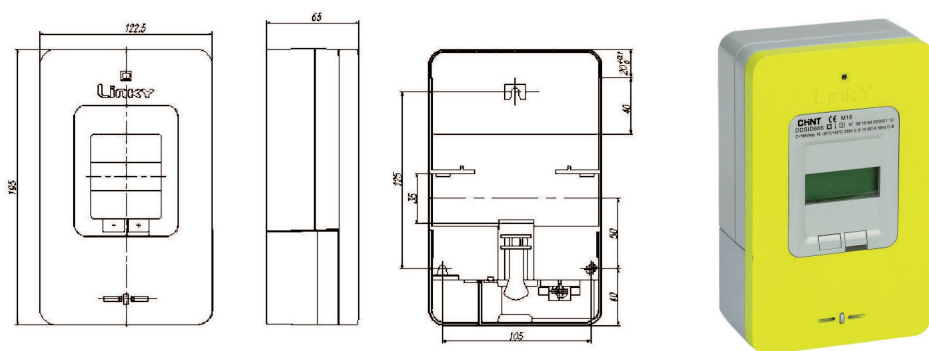
- ◆ G3-PLC with IPV6 protocol and Euridis 2 protocol, Support AES128-GCM, MD5, GMAC and other encryption communication methods of DLMS/COSEM, ensures an open and secure communication system, has excellent compatibility.
- ◆ Unidirectional or Bi-directional active energy /reactive measurement, including forward active energy/reverse active energy/four-quadrant reactive energy measurement, Instantaneous value measurement.
- ◆ Multi-tariff function: supply contract and grid contract.
 - a) Supply contract : With 12 season tables, 8 week profile tables, 10 day profile tables and 11 switch-time tables; With 30 special days, 3 peak days, 20 special actions.
 - b) Grid contract : With 4 season tables, 4 week profile tables, 4 day profile tables and 11 switch-time tables; With 30 special days.
- ◆ Independent RTC with accuracy 0.5s /day at full temperature range, and leap year auto switch.
- ◆ Three communication modes: G3-PLC supported IPV6 communications; Euridis 2 (IEC62056-31withDLMS)communications; TIC with IHD(In home Display).
- ◆ Effectively suppress magnetic interference.
- ◆ Tamper Cheat detection and strong magnetic field detection function, while ensuring PLC communication at 500mT field.
- ◆ Remote communication control load switch on/off function; and automatically detect (user breaker status) to close and open load switch.
- ◆ Relay control water heater and virtual relay control function.
- ◆ Multiple event logs and load profile record function.
- ◆ Local or remote firmware upgrades, the function of the meter can be extended.
- ◆ Have a long life dot matrix LCD display which can display 3 lines of 16 characters.
- ◆ LCD backlight can increase readability under low light condition.
- ◆ 20-year lifetime.
- ◆ Support three-point screw fixation and DIN rail fixation.

➤ DDSID666 Single Phase Smart Meter

● DDSID666 Main Technical Parameter

Description	Value
Rated voltage	230V
Operating voltage range	160-276V
Current	10(60)A, 10(90)A
Rated frequency	50Hz
Power consumption (without modem)	Voltage circuit $\leq 2W/10VA$ Current circuit $\leq 4VA$
Working temperature	-25°C to +55°C(Normal) -40°C to +70°C(Limit)
Housing	IP52
Dimension	195mm*122.5mm*65mm
Net weight	1.5kg

● DDSID666 Installation Diagram



➤ DDZY666 Single Phase Smart Meter

● General

DDZY666 single phase smart meter is the smart measurement and load control unit which can be used in one phase two wire power network. It can be integrated into AMI system and it complies with IEC and EN standard and uses DLMS/COSEM HDLC and IPV4 protocol to communicate with the utility by local communication (RS485 and Optical port) and remote communication modem for energy consumption monitoring/power net quality monitoring/load limited monitoring/event record monitoring.

● Highlight

- ◆ DLMS/COSEM HDLC and IPV4 protocol ensures an open and secure communicational system and well compatibility performance.
 - ◆ Supporting multi remote communication modem, for example: GPRS/3G/4G/PRIME-PLC/G3-PLC/Mesh RF/Ethernet, Easy to replace on site and register automatically.
 - ◆ Unidirectional or Bi-directional energy measurement, including active forward and reverse active energy measurement, Instantaneous value measurement.
 - ◆ Combinational reactive energy and four quadrant reactive energy, apparent energy.
 - ◆ Multi-tariff with 10 switch-time tables, 8 day tables, 12 week tables and 12 season tables.
 - ◆ Maximum demand for total and tariffs active/reactive/apparent power.
 - ◆ Internal switch relay for load control by configuring, load limited control and at least 6 channel load profile records.
 - ◆ Event log function including multiple tamper event detections/power off event detection /load control detections.
 - ◆ Flexible RTC with accuracy 0.5s/day, and leap year auto switch.
 - ◆ Easy to identify the alarm and error via the LCD display and LED.
 - ◆ Easy to operate by 2 buttons.
 - ◆ Standard BS or DIN bottom convenient for site installation.
 - ◆ Easy to replace the Battery in the field.
 - ◆ LCD backlight can increase readability under low light condition.
-

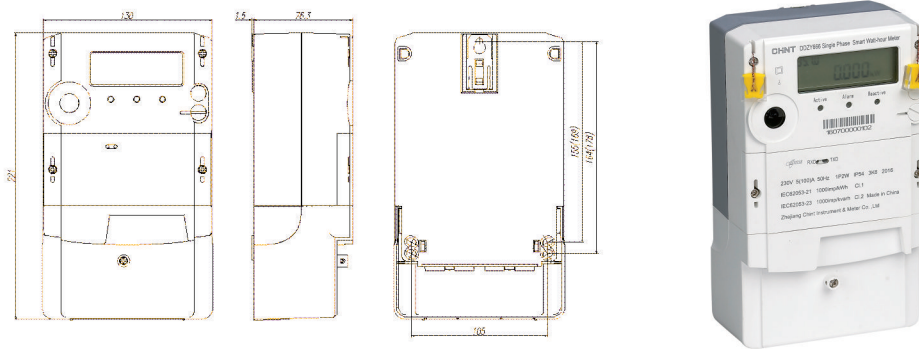
● DDZY666 Main Technical Parameter:

Description	Value
Rated voltage	220V~240V
Operating voltage range	70%Un~120%Un
Current	5(60)A, 5(80)A, 5(100)A
Rated frequency	50Hz,60Hz

> DDZY666 Single Phase Smart Meter

Power Consumption	Voltage circuit $\leq 2W/10VA$ Current circuit $\leq 4VA$
Working temperature	-25°C to +55°C (Normal) -40°C to +75°C (Limit)
Protection Degree	IP54 outdoor
Dimension	221mmX130mmX76.3mm

● DDZY666 installation diagram



> DDZY666J Single Phase Smart Prepayment Meter

● General

DDZY666J single phase smart prepayment meter is the smart measurement and load control unit which can be used in one phase two wire power network. It can be integrated into AMI vending system and it complies with IEC\EN\STS standard and uses DLMS/COSEM and STS protocol to communicate with the utility by local communication (RS485 and Optical port) and remote communication modem for energy consumption monitoring/power net quality monitoring/load limited monitoring/event record monitoring/credit charging.

● Highlight

- ◆ DLMS/COSEM HDLC and IPV4 protocol ensures an open and secure communicational system and well compatibility performance.
 - ◆ STS standard protocol ensures an open and secure prepayment vending system, the numeric token is transferred into the meter via local and remote communication.
 - ◆ Prepayment and postpaid mode switchable according to customers' requirement.
 - ◆ Supporting multi remote communication modem, for example: GPRS/3G/4G/PRIME-PLC/G3-PLC/Mesh RF/Ethernet, Easy to replace on site and register automatically.
 - ◆ Unidirectional or Bi-directional energy measurement, including active forward and reverse active energy measurement, Instantaneous value measurement.
 - ◆ Combinational reactive energy and four quadrant reactive energy, apparent energy.
 - ◆ Multi-tariff with 10 switch-time tables, 8 day tables, 12 week tables and 12 season tables.
 - ◆ Maximum demand for total and tariffs active/reactive/apparent power.
 - ◆ Internal switch relay for load control by configuring, load limited control and at least 6 channel load profile records.
 - ◆ Event log function including multiple tamper event detections/power net event detections /load control detections.
 - ◆ Flexible RTC with accuracy 0.5s/day, and leap year auto switch.
 - ◆ Easy to identify the alarm and error via the LCD display and LED.
 - ◆ Easy to operate by 2 buttons and 3x4 number function keypad.
 - ◆ Standard BS or DIN bottom convenient for site installation.
 - ◆ Easy to replace the Battery, without uninstalling.
 - ◆ LCD backlight can increase readability under low light condition.
-

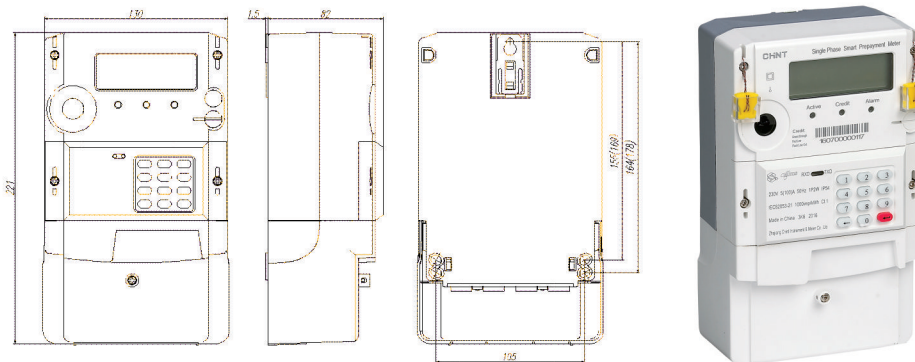
● DDZY666J Main Technical Parameter

Description	Value
Rated voltage	220V~240V
Operating voltage range	70%Un~120%Un

DDZY666J Single Phase Smart Prepayment Meter

Current	5(60)A, 5(80)A, 5(100)A
Rated frequency	50Hz, 60Hz
Power Consumption (without modem)	Voltage circuit $\leq 2W/10VA$ Current circuit $\leq 4VA$
Working temperature	-25°C to +55°C (Normal) -40°C to +75°C (Limit)
Protection Degree	IP54 outdoor
Dimension	221mmX130mmX82mm

DDZY666J installation diagram



> DTZY666 Three Phase Smart Meter

● General

DTZY666 three phase smart meter is the smart measurement and load control unit which can be used in three phase four wire power network. It can be integrated into AMI system and it complies with IEC and EN standard and uses DLMS/COSEM HDLC and IPV4 protocol to communicate with the utility by local communication (RS485 and Optical port) and remote communication modem for energy consumption monitoring/power net quality monitoring/load limited monitoring/event record monitoring.

● Highlight

- ◆ DLMS/COSEM HDLC and IPV4 protocol ensures an open and secure communicational system and well compatibility performance.
 - ◆ Supporting multi remote communication modem, for example: GPRS/3G/4G/PRIME-PLC/G3-PLC/Mesh RF/Ethernet, Easy to replace on site and register automatically.
 - ◆ Unidirectional or Bi-directional energy measurement, including active forward and reverse active energy measurement, Instantaneous value measurement.
 - ◆ Combinational reactive energy and four quadrant reactive energy, apparent energy and active/reactive/apparent energy of each phase (ABC).
 - ◆ Multi-tariff with 10 switch-time tables, 8 day tables, 12 week tables and 12 season tables.
 - ◆ Maximum demand for total and tariffs active/reactive/apparent power.
 - ◆ Internal switch relay for load control by configuring, load limited control and at least 6 channel load profile records.
 - ◆ Event log function including multiple tamper event detections/power net event detections /load control detections.
 - ◆ Flexible RTC with accuracy 0.5s/day, and leap year auto switch.
 - ◆ Easy to identify the alarm and error via the LCD display and LED.
 - ◆ Easy to operate by 2 buttons.
 - ◆ Standard BS or DIN bottom convenient for site installation.
 - ◆ Easy to replace the Battery in the field.
 - ◆ LCD backlight can increase readability under low light condition.
-

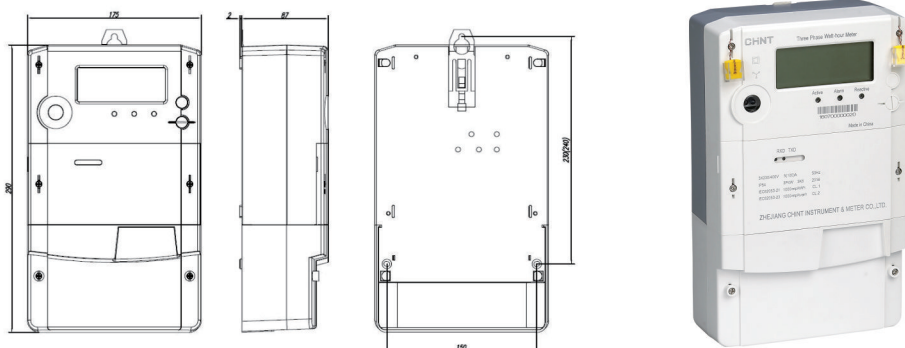
● DTZY666 Main Technical Parameter

Description	Value
Rated voltage	3x220/380V~3x240/415V
Operating voltage range	70%Un~120%Un
Current	5(60)A, 5(80)A, 5(100)A
Rated frequency	50Hz, 60Hz

DTZY666 Three Phase Smart Meter

Power Consumption	Voltage circuit $\leq 2W/10VA$ Current circuit $\leq 4VA$
Working temperature	-25°C to +55°C(Normal) -40°C to +75°C(Limit)
Protection Degree	IP54 outdoor
Dimension	290mmX175mmX87mm

DTZY666 installation diagram



> DTZY666J Three Phase Smart Prepayment Meter

● General

DTZY666J three phase smart prepayment meter is the smart measurement and load control unit which can be used in three phase four wire power network. It can be integrated into AMI vending system and it complies with IEC\EN\STS standard and use DLMS/COSEM and STS protocol to communicate with the utility by local communication (RS485 and Optical port) and remote communication modem for energy consumption monitoring/power net quality monitoring/load limited monitoring/event record monitoring/credit charging.

● Highlight

- ◆ DLMS/COSEM HDLC and IPV4 protocol ensures an open and secure communicational system, has the very great compatibility.
 - ◆ STS standard protocol ensures an open and secure prepayment vending system, the numeric token is transferred into the meter via the local and remote communication.
 - ◆ Prepayment and postpaid mode switchable according to customers' requirement.
 - ◆ Supporting multi remote communication modem, for example: GPRS/3G/4G/PRIME-PLC/G3-PLC/Mesh RF/Ethernet, Easy to replace on site and register automatically.
 - ◆ Unidirectional or Bi-directional energy measurement, including active forward and reverse active energy measurement, Instantaneous value measurement.
 - ◆ Combinational reactive energy and four quadrant reactive energy, apparent energy and active/reactive/apparent energy of each phase (ABC).
 - ◆ Multi-tariff with 10 switch-time tables, 8 day tables, 12 week tables and 12 season tables.
 - ◆ Maximum demand for total and tariffs active/reactive/apparent power.
 - ◆ Internal switch relay for load control by configuring, load limited control and at least 6 channel load profile records.
 - ◆ Event log function including multiple tamper event detections/power net event detections/load control detections.
 - ◆ Flexible RTC with accuracy 0.5s/day, and leap year auto switch.
 - ◆ Easy to identify the alarm and error via the LCD display and LED.
 - ◆ Easy to operate by 2 buttons and 3x4 number function keypad.
 - ◆ Standard BS or DIN bottom convenient for site installation.
 - ◆ Easy to replace the Battery, without uninstalling.
 - ◆ LCD backlight can increase readability under low light condition.
-

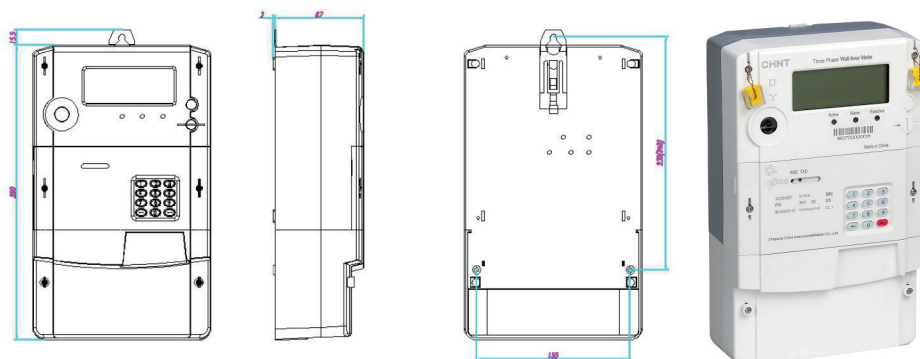
● DTZY666J Main Technical Parameter

Description	Value
Rated voltage	3x220/380V~3x240/415V
Operating voltage range	70%Un~120%Un

> DTZY666J Three Phase Smart Prepayment Meter

Current	5(60)A, 5(80)A, 5(100)A
Rated frequency	50Hz,60Hz
Power Consumption (without modem)	Voltage circuit $\leq 2W/10VA$ Current circuit $\leq 4VA$
Working temperature	-25°C to +55°C(Normal) -40°C to +75°C(Limit)
Protection Degree	IP54 outdoor
Dimension	290mmX175mmX87mm

● DTZY666J installation diagram



> DDSJ666

○ The single phase neutral-missing anti-tampering solution

● General

DDSJ666 single phase neutral-missing anti-tampering meter is which can be used in one phase two wire power network. It can measure the Unidirectional or Bi-directional active energy and Maximum demand. It has fully anti-tampering, key button display, power off display, event alarm functions. It complies with IEC and UL standards and has stable performance, high accuracy and convenient operation.

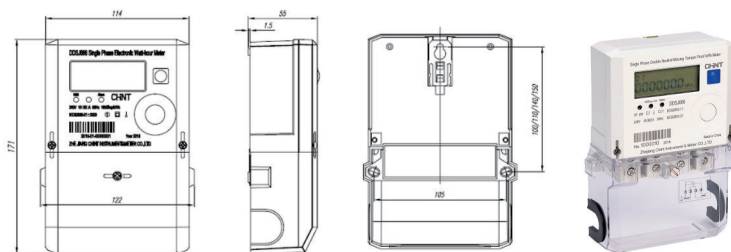
● Function

- ◆ Unidirectional or Bi-directional energy measurement, including active forward and reverse energy measurement, Instantaneous value measurement(voltage\current\power).
- ◆ Measure the Maximum demand with interval or slip mode.
- ◆ Anti-tampering: Reverse current\By pass\Neutral missing\Main cover opening, when tampering happened, it can work normally and trigger event alarms.
- ◆ Real time clock with leap year automatically switches.
- ◆ Power off display with internal battery.
- ◆ Using automatic software calibration technology, fast speed, high accuracy.
- ◆ Integrated the PCB and terminal box, it is easy for SKD.

● DDSJ666 Main Technical Parameter

Description	Value
Rated voltage	220V~240V
Operating voltage range	70%Un~120%Un
Current	10(60)A, 10(80)A, 10(100)A
Rated frequency	50Hz, 60Hz
Power Consumption	Voltage circuit \leq 0.5W/7.5VA Current circuit \leq 1VA
Working temperature	-25 $^{\circ}$ C to +55 $^{\circ}$ C (Normal) -40 $^{\circ}$ C to +75 $^{\circ}$ C (Limit)
Housing	IP54 indoor
Dimension	114mmX171mmX55mm

● DDSJ666 Wiring Diagram



> DDSY666 & CIU666K-P

○ The PLC/RF Split DIN-rail prepayment solution

● General

DDSY666 single phase split DIN-rail prepayment meter is the control unit which can be used in one phase two wire or one phase three wire power network. It complies with STS standard and communicates with the CIU/UIU by PLC or RF for energy consumption monitoring and credit charging.

CIU666K-P customer interface unit is the credit charging unit with keypad. It communicates with meters or control units by PLC or RF for energy consumption and credit balance monitoring, credit limitation alarming and credit charging.

● Function

- ◆ STS standard protocol ensures an open and secure prepayment system, the numeric token is transferred into the meter via the local CIU/UIU with PLC or RF.
- ◆ Internal switch relay for load control by configuring.
- ◆ Prepayment and postpaid mode switchable according to customers' requirement.
- ◆ Unidirectional or Bi-directional energy measurement, including active forward and reverse energy measurement, Instantaneous value measurement.
- ◆ Inquired by CIU/UIU for instant information/present energy/historical energy.
- ◆ Event log function including multiple event detections/emergency credit/overload log.
- ◆ Easy to operate by 3x4 number and function keypad.
- ◆ Easy to match, convenient for site installation.
- ◆ Easy to replace the Battery, without uninstalling.
- ◆ LCD backlight can increase readability under low light condition.

● DDSY666 Main Technical Parameter

Description	Value
Rated voltage	220V~240V
Operating voltage range	70%Un~120%Un
Current	5(60)A, 5(80)A, 5(100)A
Rated frequency	50Hz, 60Hz
Power Consumption	Voltage circuit ≤2W/10VA Current circuit ≤4VA
Working temperature	-25°C to +55°C(Normal) -40°C to +75°C(Limit)
Housing	IP54 indoor
Dimension	138mmX100mmX50mm

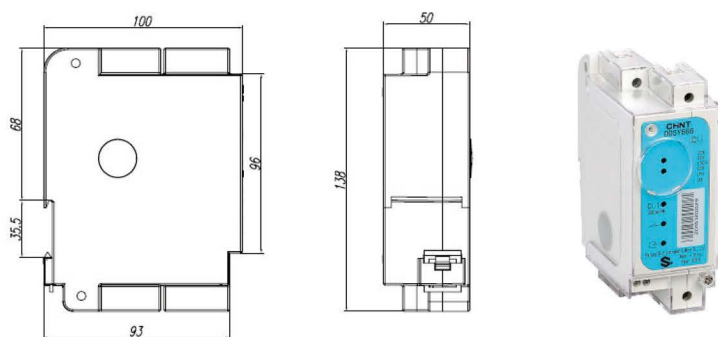
> DDSY666 & CIU666K-P

○ The PLC/RF Split DIN-rail prepayment solution

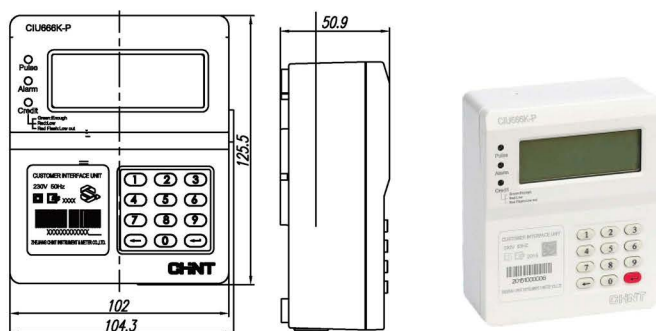
● CIU666K-P Main Technical Parameter

Description	Value
Display dimension	74mmX32mm
Number of display digits	8
Working temperature	-25°C to +55°C(Normal) -40°C to +75°C(Limit)
Humidity	Up to 95%
Housing	IP54 indoor
Meter cover	Non-transparent PC+ fiber glass with a transparent window
Meter base	Non-transparent PC+ fiber glass
Dimension	102mmX125mmX51mm

● DDSY666 Wiring Diagram



● CIU666K-P Wiring Diagram



> DDSY666 & CIU666K-M

○ The Wired MBUS Split DIN-rail prepayment solution

● General

DDSY666 single phase split DIN-rail prepayment meter is the control unit which can be used in one phase two wire or one phase three wire power network. It complies with STS standard and communicates with the CIU/UIU by MBUS for energy consumption monitoring and credit charging.

CIU666K-M customer interface unit is the credit charging unit with keypad. It communicates with meters or control units by MBUS for energy consumption and credit balance monitoring, credit limitation alarming and credit charging.

● Function

- ◆ STS standard protocol ensures an open and secure prepayment system, the numeric token is transferred into the meter via the local CIU/UIU with MBUS.
- ◆ Internal switch relay for load control by configuring.
- ◆ Prepayment and postpaid mode switchable according to customers' requirement.
- ◆ Unidirectional or Bi-directional energy measurement, including active forward and reverse energy measurement, Instantaneous value measurement.
- ◆ Inquired by CIU/UIU for instant information/present energy/historical energy.
- ◆ Event log function including multiple event detections/emergency credit/overload log.
- ◆ Easy to operate by 3x4 number and function keypad.
- ◆ Easy to match, convenient for site installation.
- ◆ LCD backlight can increase readability under low light condition.

● DDSY666 Main Technical Parameter

Description	Value
Rated voltage	220V~240V
Operating voltage range	70%Un~120%Un
Current	5(60)A, 5(80)A, 5(100)A
Rated frequency	50Hz,60Hz
Power Consumption	Voltage circuit≤2W/10VA Current circuit ≤4VA
Working temperature	-25°C to +55°C(Normal) -40°C to +75°C(Limit)
Housing	IP54 indoor
Dimension	138mmX100mmX50mm

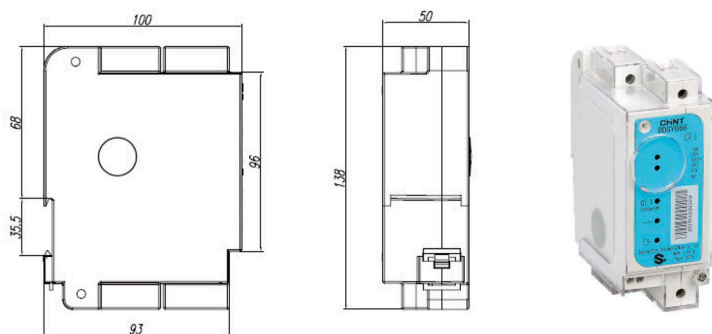
> DDSY666 & CIU666K-M

○ The Wired MBUS Split DIN-rail prepayment solution

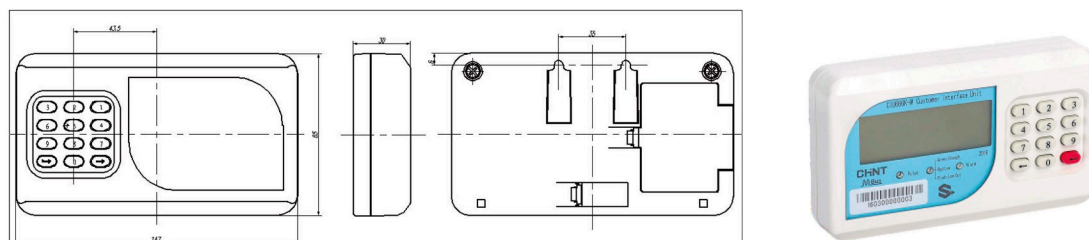
● CIU666K-M Main Technical Parameter

Description	Value
Display dimension	74mmX32mm
Number of display digits	8
Working temperature	-25°C to +55°C(Normal) -40°C to +75°C(Limit)
Humidity	Up to 95%
Housing	IP54 indoor
Meter cover	Non-transparent PC+ fiber glass with a transparent window
Meter base	Non-transparent PC+ fiber glass
Dimension	147mmX85mmX30mm

● DDSY666 Wiring Diagram



● CIU666K-M Wiring Diagram



> DDSY666J & CIU666K-M

○ The Wired MBUS Split Keypad prepayment solution

● General

DDSY666J single phase split keypad prepayment meter is the control and interface unit which can be used in one phase two wire power network. It complies with STS standard and communicates with the CIU/UIU by MBUS for energy consumption monitoring and credit charging.

CIU666K-M customer interface unit is the credit charging unit with keypad. It communicates with meters or control units by MBUS for energy consumption and credit balance monitoring, credit limitation alarming and credit charging.

● Function

- ◆ STS standard protocol ensures an open and secure prepayment system, the numeric token is transferred into the meter via the local CIU/UIU with MBUS.
- ◆ Internal switch relay for load control by configuring.
- ◆ Prepayment and postpaid mode switchable according to customers' requirement.
- ◆ Unidirectional or Bi-directional energy measurement, including active forward and reverse energy measurement, Instantaneous value measurement.
- ◆ Inquired by CIU/UIU for instant information/present energy/historical energy.
- ◆ Event log function including multiple event detections/emergency credit/overload log.
- ◆ Easy to operate by 3x4 number and function keypad.
- ◆ Easy to match, convenient for site installation.
- ◆ Easy to replace the Battery, without uninstalling.
- ◆ LCD backlight can increase readability under low light condition.

● DDSY666 Main Technical Parameter

Description	Value
Rated voltage	220V~240V
Operating voltage range	70%Un~120%Un
Current	5(60)A, 5(80)A, 5(100)A
Rated frequency	50Hz, 60Hz
Power Consumption	Voltage circuit≤2W/10VA Current circuit ≤4VA
Working temperature	-25℃ to +55℃(Normal) -40℃ to +75℃(Limit)
Housing	IP54 indoor
Dimension	210mmX127mmX71mm

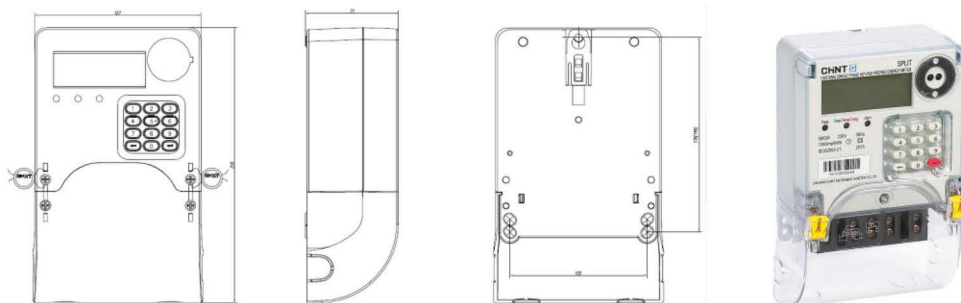
> DDSY666J & CIU666K-M

○ The Wired MBUS Split Keypad prepayment solution

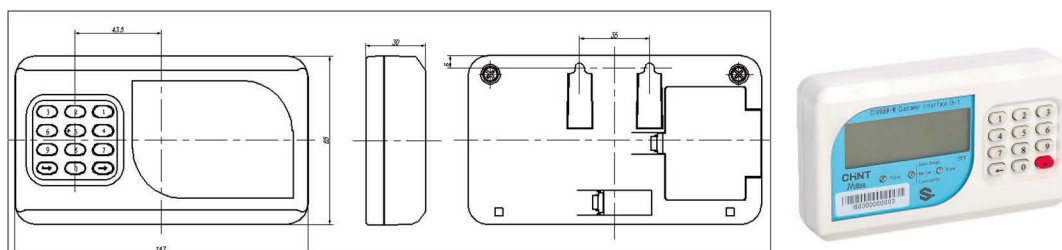
● CIU666K-M Main Technical Parameter

Description	Value
Display dimension	74mmX32mm
Number of display digits	8
Working temperature	-25°C to +55°C (Normal) -40°C to +75°C (Limit)
Humidity	Up to 95%
Housing	IP54 indoor
Meter cover	Non-transparent PC+ fiber glass with a transparent window
Meter base	Non-transparent PC+ fiber glass
Dimension	147mmX85mmX30mm

● DDSY666J Wiring Diagram



● CIU666K-M Wiring Diagram



> DDSY666J & CIU666K-P

○ The PLC/RF Split Keypad prepayment solution

● General

DDSY666J single phase split keypad prepayment meter is the control and interface unit which can be used in one phase two wire power network. It complies with STS standard and communicates with the CIU/UIU by PLC or RF for energy consumption monitoring and credit charging.

CIU666K-P customer interface unit is the credit charging unit with keypad. It communicates with meters or control units by PLC or RF for energy consumption and credit balance monitoring, credit limitation alarming and credit charging.

● Function

- ◆ STS standard protocol ensures an open and secure prepayment system, the numeric token is transferred into the meter via the local CIU/UIU with PLC or RF.
- ◆ Internal switch relay for load control by configuring.
- ◆ Prepayment and postpaid mode switchable according to customers' requirement.
- ◆ Unidirectional or Bi-directional energy measurement, including active forward and reverse energy measurement, Instantaneous value measurement.
- ◆ Inquired by CIU/UIU for instant information/present energy/historical energy.
- ◆ Event log function including multiple event detections/emergency credit/overload log.
- ◆ Easy to operate by 3x4 number and function keypad.
- ◆ Easy to match, convenient for site installation.
- ◆ Easy to replace the Battery, without uninstalling.
- ◆ LCD backlight can increase readability under low light condition.

● DDSY666J Main Technical Parameter

Description	Value
Rated voltage	220V~240V
Operating voltage range	70%Un~120%Un
Current	5(60)A, 5(80)A, 5(100)A
Rated frequency	50Hz,60Hz
Power Consumption	Voltage circuit≤2W/10VA Current circuit ≤4VA
Working temperature	-25℃ to +55℃ (Normal) -40℃ to +75℃ (Limit)
Housing	IP54 indoor
Dimension	210mm×127mm×71mm

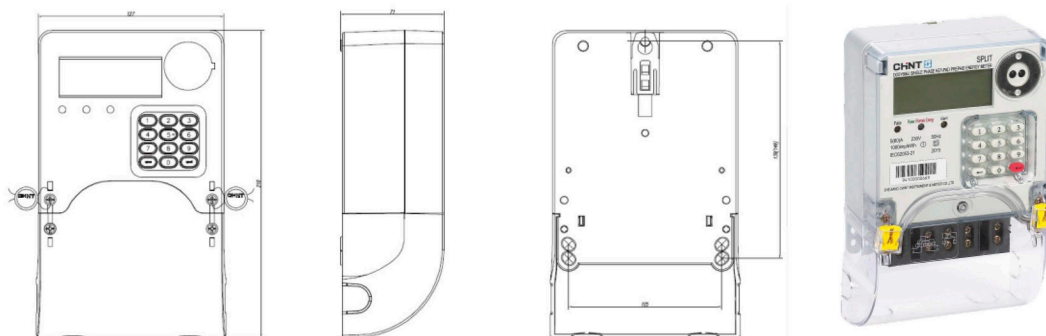
> DDSY666J & CIU666K-P

○ The PLC/RF Split Keypad prepayment solution

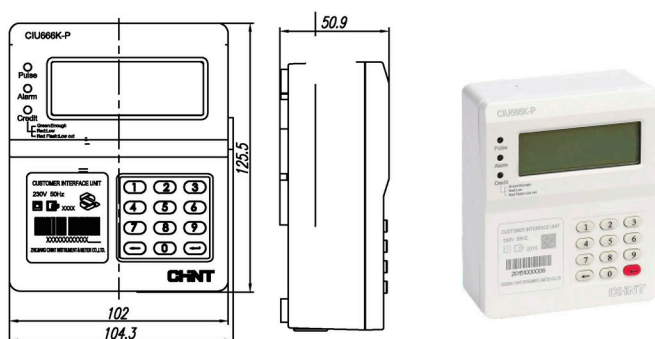
● CIU666K-P Main Technical Parameter

Description	Value
Display dimension	74mmX32mm
Number of display digits	8
Working temperature	-25℃ to +55℃ (Normal) -40℃ to +75℃ (Limit)
Humidity	Up to 95%
Housing IP54 indoor	Housing IP54 indoor
Meter cover	Non-transparent PC+ fiber glass with a transparent window
Meter base	Non-transparent PC+ fiber glass
Dimension	102mmX125mmX51mm

● DDSY666J Wiring Diagram



● CIU666K-P Wiring Diagram



> DTSY666J & CIU666K-P

○ The PLC/RF Split Keypad prepayment solution

● General

DTSY666J Three phase split keypad prepayment meter is the control and interface unit which can be used in 3 phase 4 wire power network. It complies with STS standard and communicates with the CIU/UIU by PLC or RF for energy consumption monitoring and credit charging.

CIU666K-P customer interface unit is the credit charging unit with keypad. It communicates with meters or control units by PLC or RF for energy consumption and credit balance monitoring, credit limitation alarming and credit charging.

● Function

- ◆ STS standard protocol ensures an open and secure prepayment system, the numeric token is transferred into the meter via the local CIU/UIU with PLC or RF.
- ◆ Internal switch relay for load control by configuring.
- ◆ Prepayment and postpaid mode switchable according to customers' requirement.
- ◆ Unidirectional or Bi-directional energy measurement, including active forward and reverse energy measurement, Instantaneous value measurement.
- ◆ Inquired by CIU/UIU for instant information/present energy/historical energy.
- ◆ Event log function including multiple event detections/emergency credit/overload log.
- ◆ Easy to operate by 3x4 number and function keypad.
- ◆ Easy to match, convenient for site installation.
- ◆ Easy to replace the battery, without uninstalling.
- ◆ LCD backlight can increase readability under low light condition.

● DTSY666J Main Technical Parameter

Description	Value
Rated voltage	3x220/380V 3x230/400V
Operating voltage range	70%Un~120%Un
Current	5(60)A, 5(80)A, 5(100)A
Rated frequency	50Hz,60Hz
Power Consumption	Voltage circuit≤2W/10VA Current circuit ≤4VA
Working temperature	-25℃ to +55℃ (Normal) -40℃ to +75℃ (Limit)
Housing	IP54 indoor
Dimension	295mm×170mm×85mm

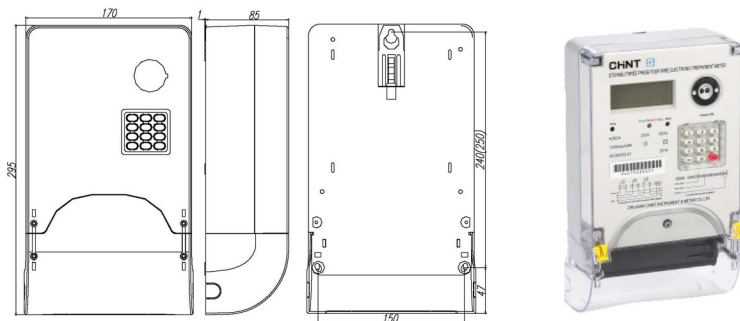
> DTSY666J & CIU666K-P

○ The PLC/RF Split Keypad prepayment solution

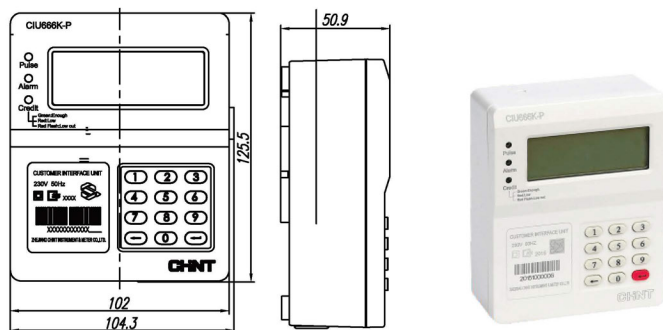
● CIU666K-P Main Technical Parameter

Description	Value
Display dimension	74mmX32mm
Number of display digits	8
Working temperature	-25℃ to +55℃ (Normal) -40℃ to +75℃ (Limit)
Humidity	Up to 95%
Housing IP54 indoor	Housing IP54 indoor
Meter cover	Non-transparent PC+ fiber glass with a transparent window
Meter base	Non-transparent PC+ fiber glass
Dimension	102mmX125mmX51mm

● DTSY666J Wiring Diagram



● CIU666K-P Wiring Diagram



> DTSY666J & CIU666K-M

○ The Wired MBUS Split Keypad prepayment solution

● General

DTSY666J Three phase split keypad prepayment meter is the control and interface unit which can be used in 3 phase 4 wire power network. It complies with STS standard and communicates with the CIU/UIU by MBUS for energy consumption monitoring and credit charging.

CIU666K-M customer interface unit is the credit charging unit with keypad. It communicates with meters or control units by MBUS for energy consumption and credit balance monitoring, credit limitation alarming and credit charging.

● Function

- ◆ STS standard protocol ensures an open and secure prepayment system, the numeric token is transferred into the meter via the local CIU/UIU with MBUS.
- ◆ Internal switch relay for load control by configuring.
- ◆ Prepayment and postpaid mode switchable according to customers' requirement.
- ◆ Unidirectional or Bi-directional energy measurement, including active forward and reverse energy measurement, Instantaneous value measurement.
- ◆ Inquired by CIU/UIU for instant information/present energy/historical energy.
- ◆ Event log function including multiple event detections/emergency credit/overload log.
- ◆ Easy to operate by 3x4 number and function keypad.
- ◆ Easy to match, convenient for site installation.
- ◆ Easy to replace the battery, without uninstalling.
- ◆ LCD backlight can increase readability under low light condition.

● DTSY666J Main Technical Parameter

Description	Value
Rated voltage	3x220/380V 3x230(400)V
Operating voltage range	70%Un~120%Un
Current	5(60)A, 5(80)A, 5(100)A
Rated frequency	50Hz,60Hz
Power Consumption	Voltage circuit≤2W/10VA Current circuit ≤4VA
Working temperature	-25℃ to +55℃ (Normal) -40℃ to +75℃ (Limit)
Housing	IP54 indoor
Dimension	295mm×170mm×85mm

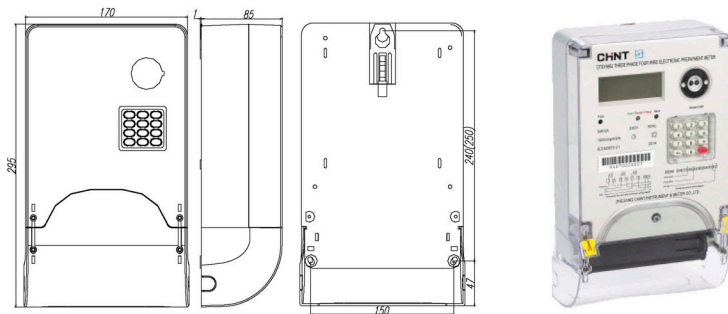
> DTSY666J & CIU666K-M

○ The Wired MBUS Split Keypad prepayment solution

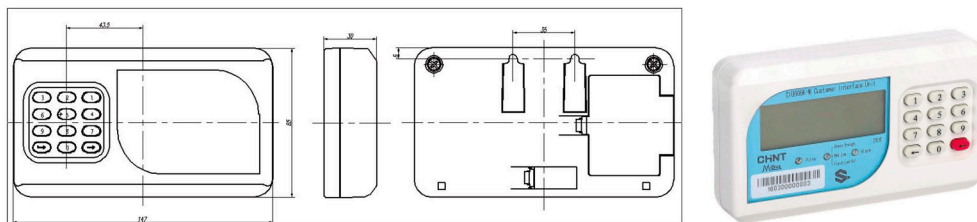
● CIU666K-M Main Technical Parameter

Description	Value
Display dimension	74mmX32mm
Number of display digits	8
Working temperature	-25℃ to +55℃ (Normal) -40℃ to +75℃ (Limit)
Humidity	Up to 95%
Housing	IP 54 indoor
Meter cover	Non-transparent PC+ fiber glass with a transparent window
Meter base	Non-transparent PC+ fiber glass
Dimension	147mmX85mmX30mm

● DTSY666J Wiring Diagram



● CIU666K-M Wiring Diagram



> DDSY666 Single Phase Prepayment Meter

○ IC card prepayment energy meter

● General

DDSY666 single phase prepayment meter is used in one phase two wire power network for residential user. It is realizing prepaid energy fee, energy metering and protecting over load power consuming.

● Function

- ◆ Active energy metering
 - ◆ Buy energy first then use. The load will automatic switch off when the bought energy used up.
 - ◆ One card one password, the data is safe and reliable.
 - ◆ With functions of information transmission, through the user card the measurement data in meter can be data back to the working state and sell electricity system, for the use of settlement, statistics, management.
 - ◆ With error operation and fault indication functions.
 - ◆ Using LCD display, can display the current total active energy used, remain energy, the latest purchasing energy
 - ◆ Easy to replace the Battery, without uninstalling.
 - ◆ LCD backlight can increase readability under low light condition.
-

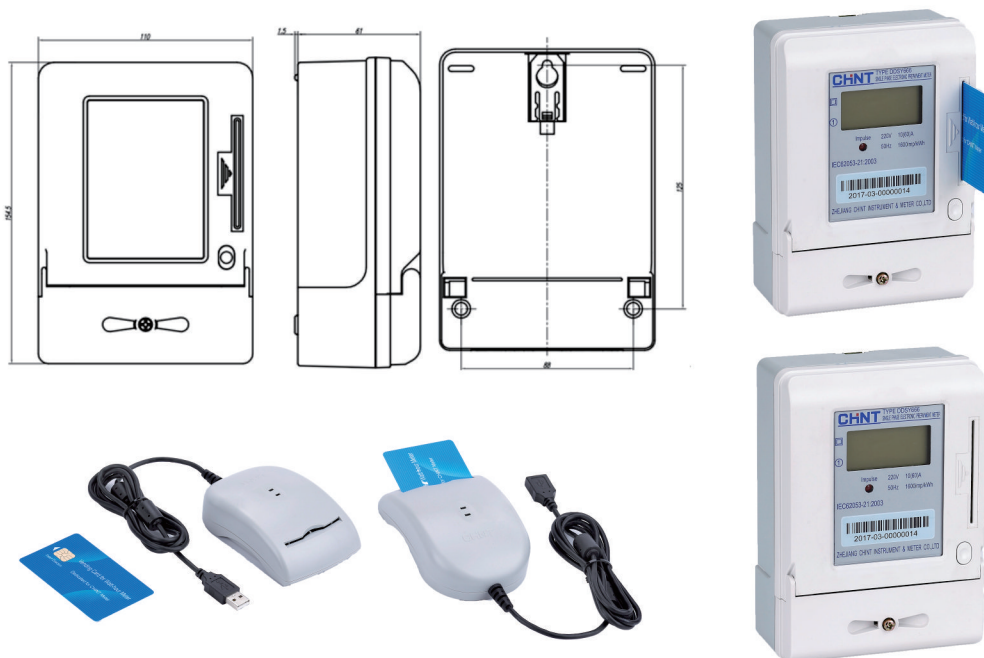
> DDSY666 Single Phase Prepayment Meter

○ IC card prepayment energy meter

● DDSY666 Main Technical Parameter

Description	Value
Rated voltage	220V~240V
Operating voltage range	70%Un~120%Un
Current	5(60)A, 10(80)A
Rated frequency	50Hz, 60Hz
Power Consumption	Voltage circuit≤2W/10VA Current circuit ≤4VA
Working temperature	-25℃ to +55℃(Normal) -40℃ to +75℃(Limit)
Housing	IP51 indoor
Dimension	154.5mmX110mmX62.5mm

● DDSY666 Appearance and Dimension



> DTSY666 Three Phase Prepayment Meter

○ IC card prepayment electric meter

● General

DTSY666 three phase prepayment meter is used in three phase four wire power network. It is realizing prepaid energy fee, energy metering and protecting over load power consuming.

● Function

- ◆ Active energy metering.
 - ◆ Buy energy first then use. The load will automatic switch off when the bought energy used up.
 - ◆ One card one password, the data is safe and reliable.
 - ◆ With functions of information transmission, through the user card the measurement data in meter can be data back to the working state and sell electricity system, for the use of settlement, statistics, management.
 - ◆ With error operation and fault indication functions.
 - ◆ Using LCD display, can display the current total active energy used, remain energy, the latest purchasing energy.
 - ◆ Easy to replace the Battery, without uninstalling.
 - ◆ LCD backlight can increase readability under low light condition.
-

> DTSY666 Three Phase Prepayment Meter

○ IC card prepayment electric meter

● DTSY666 Main Technical Parameter

Description	Value
Rated voltage	3x220/380V 3x230(400)V
Operating voltage range	70%Un~120%Un
Current	5(60)A, 10(80)A
Rated frequency	50Hz, 60Hz
Power Consumption	Voltage circuit≤2W/10VA Current circuit ≤4VA
Working temperature	-25℃ to +55℃(Normal) -40℃ to +75℃(Limit)
Housing	IP51 indoor
Dimension	255.3mm×163mm×77mm

● DTSY666 Appearance and Dimension

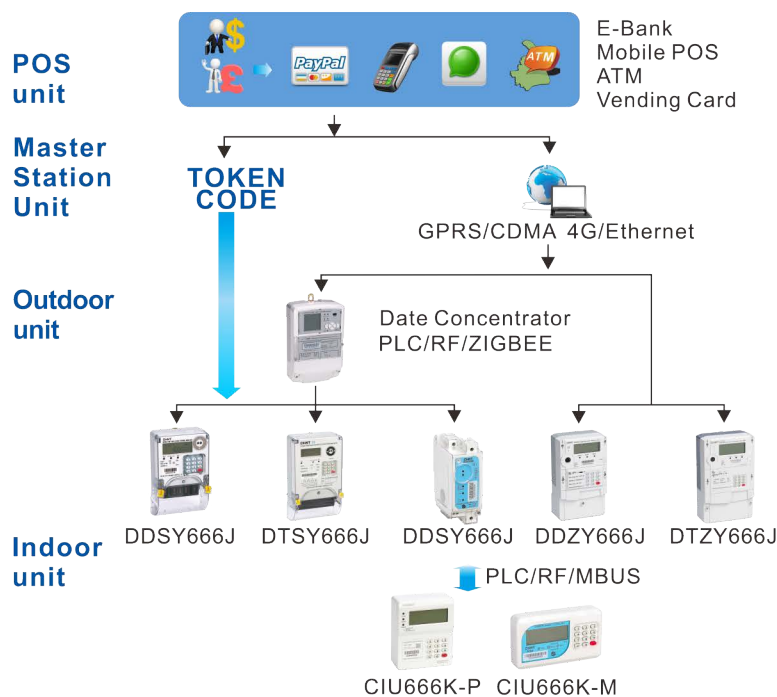


Smart Integrated prepayment vending system

General

Chint offers a reliable and affordable prepayment vending system to help utilities optimize the delivery and use of electricity, paving the way for a more efficient and reliable grid. The system has the key features of interoperability, security and scalability, includes full arrange of prepayment meters, Data concentrator, system software for vending Token, data collection, delivery, management and analyses.

Function



Functionalities

Multifunction

- ◆ STS Encryption, Tax and Tariff management.
- ◆ Authorization, supervision and management of vending point.
- ◆ Remote tariff programming, remote disconnection & reconnection.
- ◆ Demand side management and Data analysis functions.
- ◆ Tamper event, grid event, meter event collection, user-defined report, load profile.

> Smart Integrated prepayment vending system

Open Standard

- ◆ DLMS/COSEM protocol.
- ◆ STS standard protocol.
- ◆ Multi-database platform support: ORACLE, SQL-Server.

Flexibility

- ◆ Multi-vending terminals support such as E-Bank, Mobile POS, Vending Card, ATM, CDU, etc.
- ◆ Multi-Communication channels support such as GPRS, Ethernet, SMS, Optical Fiber.
- ◆ Downlink channels support such as PLC, RF, ZIGBEE, RS485, etc.

Reliability

- ◆ Independent operation management by branch office.
- ◆ Support WEB load balancing and database load balancing technology.
- ◆ Data acquisition application support multi-server.
- ◆ Unified system management and disaster recovery switchover supported by head office.

Security

- ◆ Multi-level accesses authorization management.
- ◆ User accessed and vending transaction traceable.
- ◆ Abnormal case analysis, billing data analysis, etc.

● Terminals



Prepayment meters

Smart meters

Split meter

CIU/UIU

Data concentrator

● Vending Channels

E-Bank, Mobile POS, Vending Card, ATM, CDU, etc.

● Communication Channels

GPRS, Ethernet, SMS, Optical Fiber.

ZHEJIANG CHINT INSTRUMENT & METER CO.,LTD

HEADQUARTER

Add: No.560, Yueming Road, Binjiang District, Hangzhou, Zhejiang, 310052, P.R. China

PRODUCTION BASE

Add: Wenzhou Bridge Industrial Zone, North Baixiang, Yueqing, Zhejiang, 325603, PR. China

Website: <http://im.chint.com>

Contact Us

Asia-Pacific Region:

Natalia Tu

Email: tss@chint.com

Tel: (+86) 577-62877777 ext.9290

North & South America Region:

Judy Chen

Email: cxy@chint.com

Tel: (+86) 577-62877777 ext.9289

Middle East & Africa Region:

Jessica Zhao

Email: ybzl@chint.com

Tel: (+86) 571-56977698

Europe Region:

Eric Yu

Email: ybylei@chint.com

Tel: (+86) 571-56977698

Russian-speaking Countries(CIS):

Sergey Xin

Email: Sergey.xin@chint.com

Tel: (+86) 571-56977696